

# PC Software Operation Manual

## Preface

Thank you for choosing to purchase a Uni-Trend thermal imager and please read this guide before you start using the PC software.

## System requirements

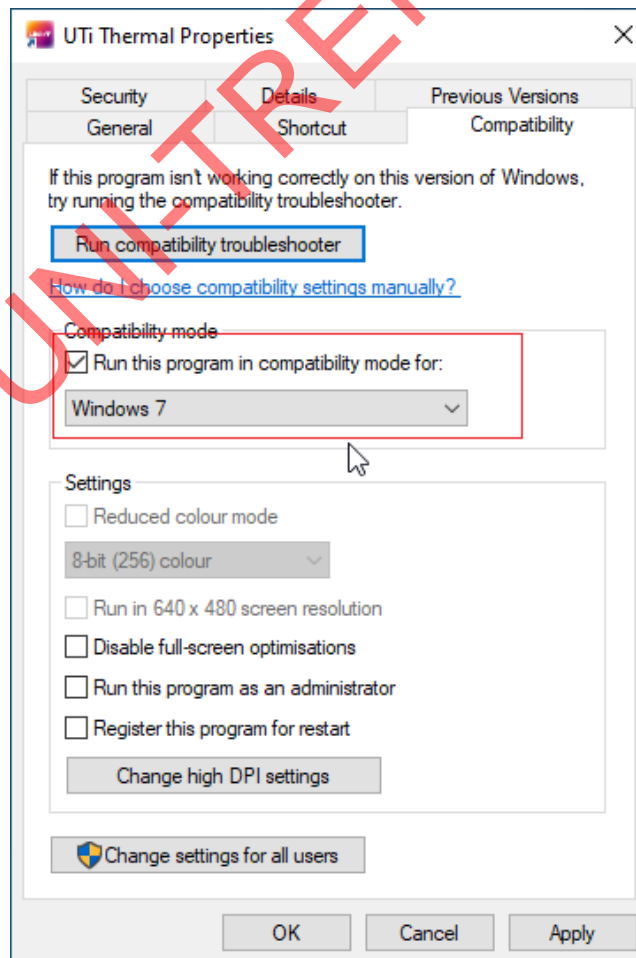
- 1GHz or higher CPU
- 1GB or more of memory
- A hard drive with 2GB or more of free space
- USB 2.0/3.0

## The software supports the operating system

If the operating system is lower than the previous version, please update the system first.

- Microsoft Windows 7 64-bit
- Microsoft Windows 8 64-bit
- Microsoft Windows 10 64-bit
- Microsoft Windows 11 64-bit

To run this software on a Microsoft Windows 7 64-bit system, you need to set it to compatibility mode to open, and place the mouse above the PC software - right-click - properties - compatibility- Tick "Run this program in compatibility mode for:" - select Windows7 - OK, compatibility settings are shown in the figure:

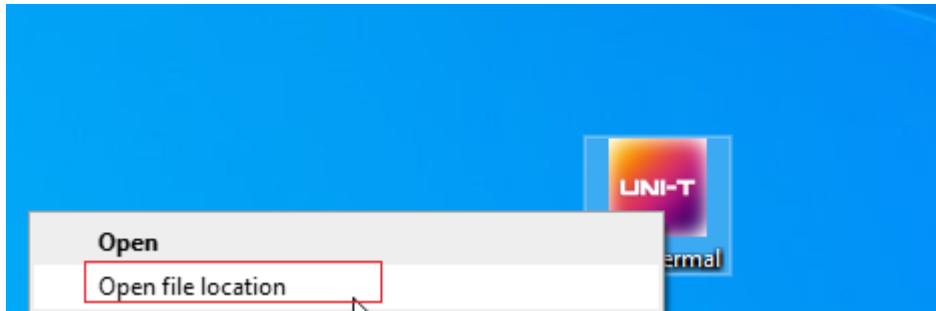


## Driver installation

### 1. V/Q series:

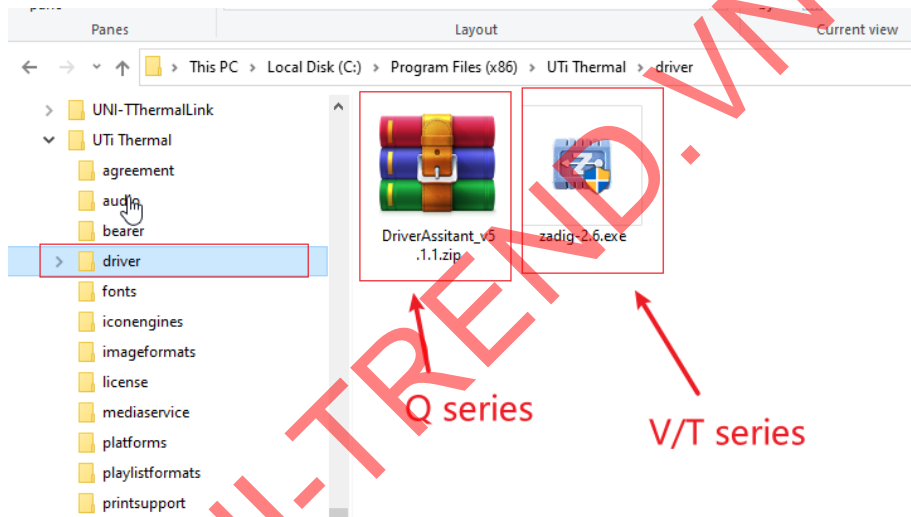
#### 1. Find the drive location:

(1) Find the PC software shortcut, right-click and select "Open file location", as shown in the figure below:



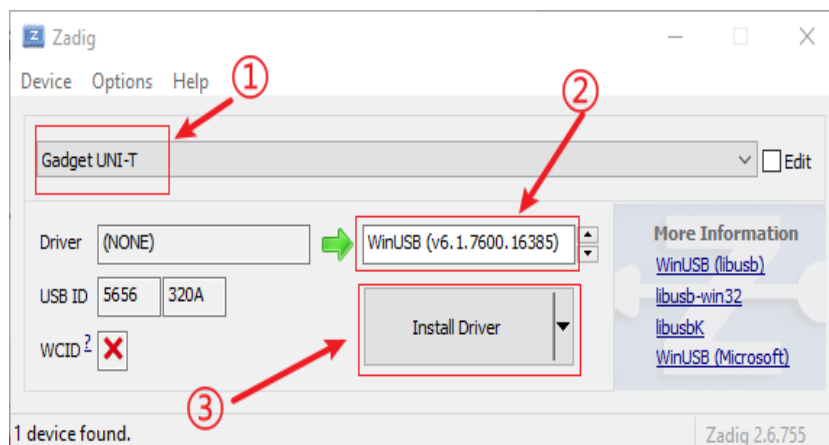
(2) Find and enter the "driver" folder.

**V/T series:** double-click "zadig-2.6 .exe"; **Q series:** double-click "DriverAssitant\_v5.1.1.zip", as shown in the figure below:



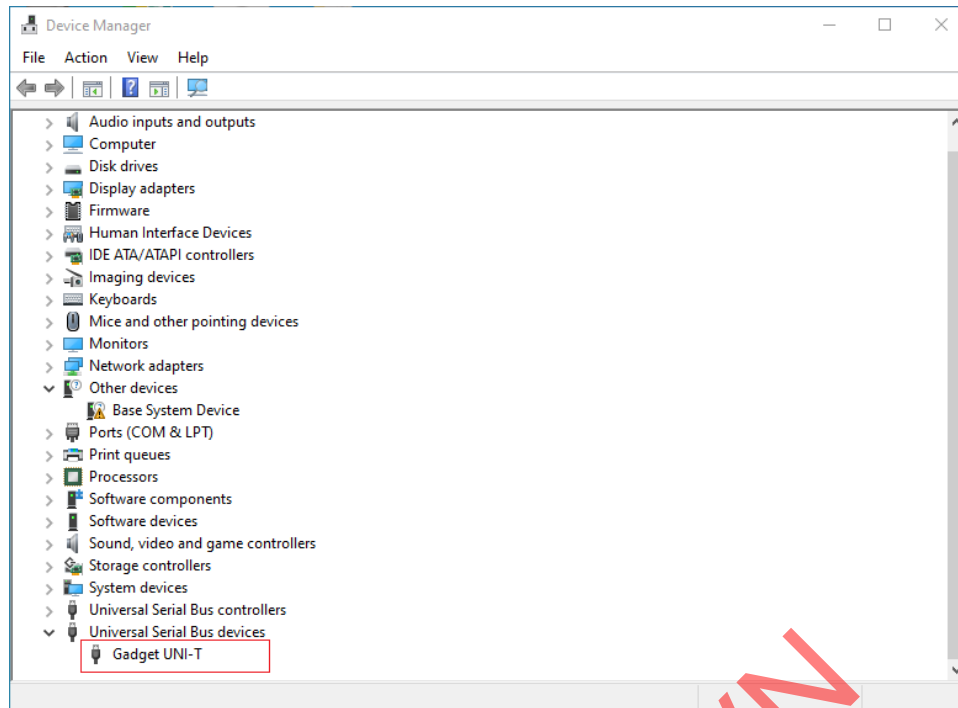
#### 2. Install the driver:

After the software is opened, the device without the driver will be automatically loaded, select the "Gadget UNI-T" device - "WinUSB" driver - click the "Install Driver" button and wait for the installation to complete, such as below:



#### 3. Installed successfully:

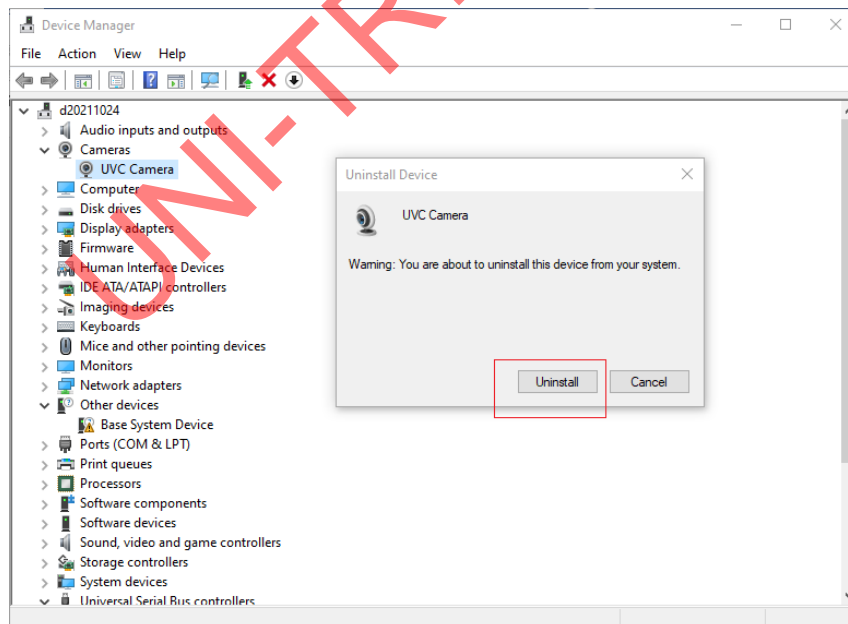
After the driver is successfully installed, we can see our device in the device manager, as shown in the figure below:

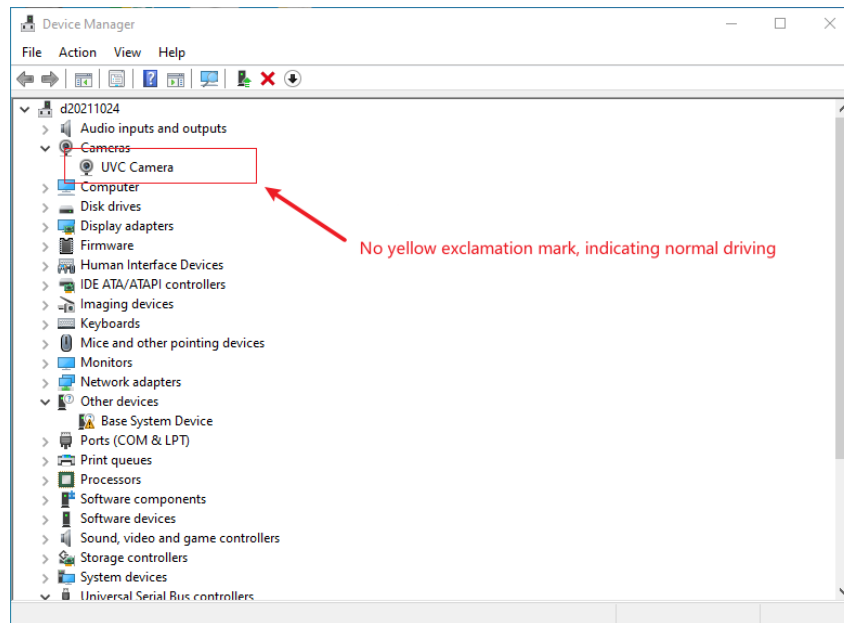


## 2. E/H series:

### 1.Install the driver:

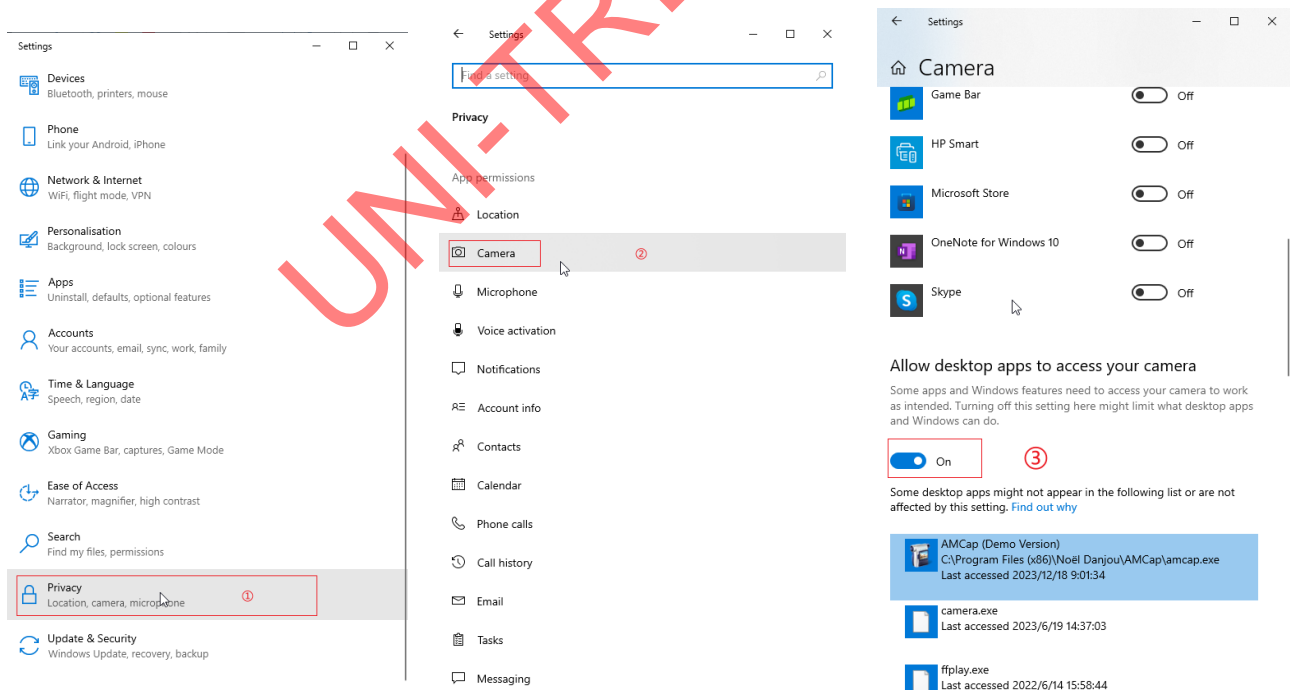
Plug in the E/H series device to automatically install the driver, after the USB is connected to the computer and the PC software is launched, please open the "Device Manager". Check whether the device driver is installed normally, if a yellow exclamation mark appears in front of the device model or there is no device model, the installation fails, please find the device and uninstall the driver first, again Plug and unplug the connected device (the device automatically installs the driver during the connection process), as shown in the following figure





## 2. Turn on PC Software Permissions:

Open the computer settings - tap Privacy - Camera - Turn on the Allow Use Total button - Open the PC app button.




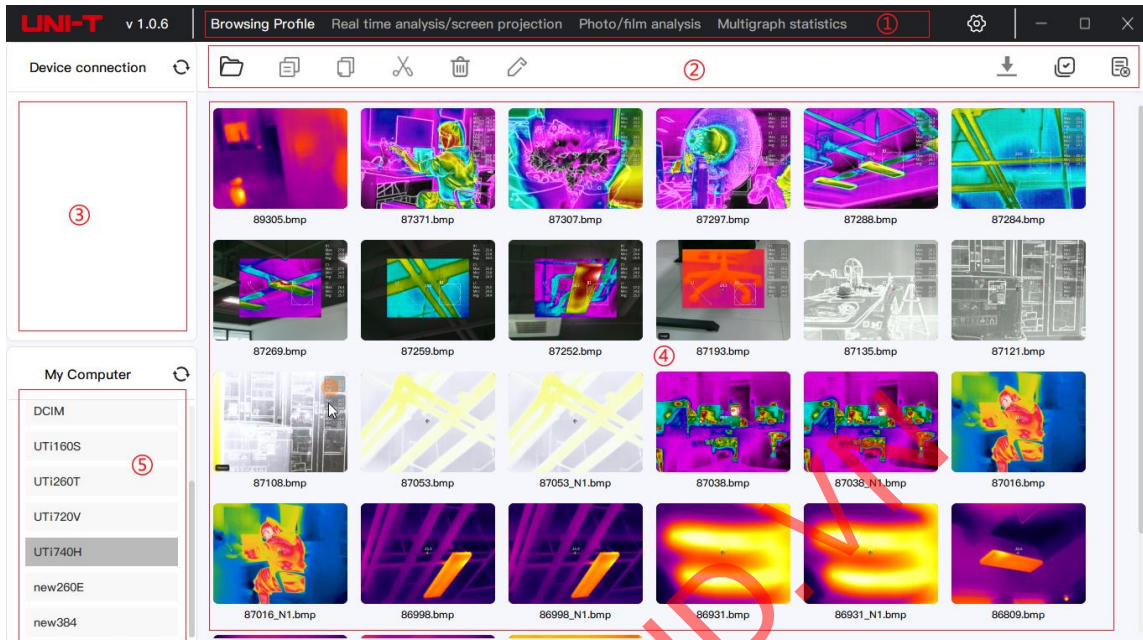
## Directory

1. Browse profile.....	5
2. Real time analysis/screen projection.....	6
3. Photo/film analysis .....	8
4. Multigraph statistics.....	10
5. Settings.....	11

UNI-TREND.VN


## 1. Browse profile

Insert the device into the SD card (the picture has been taken), and connect the Type-C port to the USB port of the computer. Open PC Software - Click "Browse Profile", click refresh  click on the device model, if not, please change the computer interface and reconnect. The interface is displayed as follows:


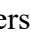


Region	Name	Description
1	Function toggle menu	Browse profile, real time analysis/screen projection, photo/film analysis, multigraph statistics, settings
2	Main menu	Open, copy, paste, cut, delete, rename, download (Q series), select all, unselect all
3	Device folder	All image folders and category folders
4	Preview area	Display the thumbnail of the image/video, and right-click the selected image to display related operations
5	My computer	Right-click to create a new folder, save the picture/video to the folder and open it directly when previewing

## 2. Real time analysis/screen projection

First, confirm that the device is set to USB projection mode, then connect the device to the computer with a USB cable. Click  on refresh - click on the device model, and then click on the specific model again. After successful connection, the projection interface is as follows:



Region	Name	Description
1	Image mode	Thermal imaging, visible light, fusion graph (projection mode blending adjustment is ineffective), picture-in-picture (stretchable and moving).
2	Swatch switching	Switchable to White Hot, Red Hot, Iron Red, Black Hot, High Rainbow, Rainbow, and Lava Swatches
	Isothermal switching	Automatic, proportional, downward, upward, interval, manual isothermal (triangle adjustment on sliding color bar)
3	Special functions (V-Series).	Shutter (calibration in fusion mode), recording, taking photos, projection/reverse control (the device cannot enter the settings interface).
4	Markup tool	Center point, high temperature point, low temperature point, temperature value
5	Temperature measurement tools	Point, line, rectangle, circle, contrast (select a temperature measurement tool, click compare, and then click another temperature measurement tool, repeat the operation to delete the comparison, point temperature measurement can only be compared with point temperature measurement), delete (delete after selecting the tool)
6	Temperature measurement data	The high and low temperature, average temperature, and comparison data display in the temperature measurement area (scroll up and down).
7	Remark	Text notes, voice notes (tap  to re-record, touch to  delete voice notes).
8	Temperature measurement	Adjustable image parameters (blend adjustment is only available for images in picture-in-picture mode)

**If the PC software prompts "Connection Failed", please check as follows:**

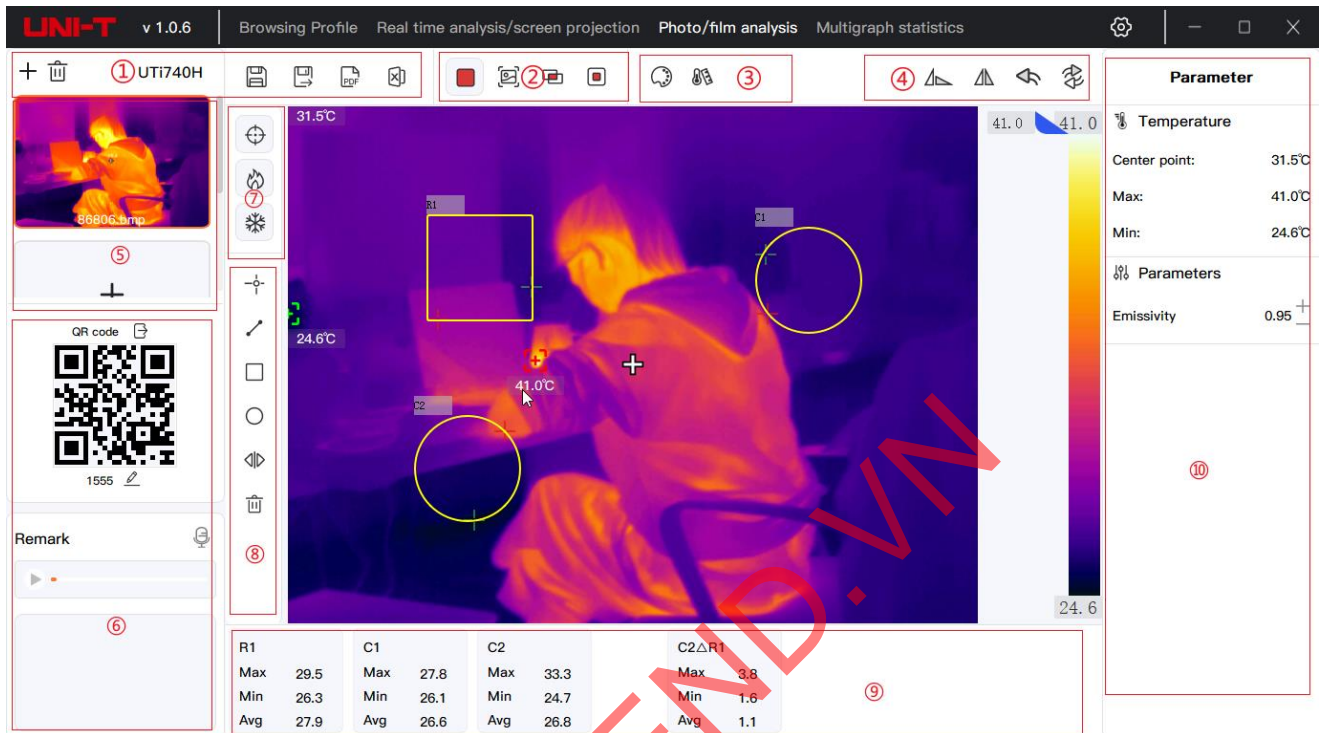
- (1) V series devices: Open the projection screen, return to the main interface, and then connect to the PC software;
- (2) Check whether the above drivers are installed on the computer according to the above prompts, and check whether the computer system is compatible;
- (3) Check whether the computer has the relevant permissions turned on according to the above prompts;
- (4) If the computer system is compatible and the driver has been installed, please plug in the USB, replace the computer USB interface and repeat the above connection operations.

UNI-TREND.VN



### 3. Photo/film analysis

Double-click any image to enter the photo/video analysis page of the image, as shown in the following figure



Region	Name	Description
1	Main menu	Add, delete, save, save, export PDF, export Excel
2	Image mode	Thermography, visible light, fusion graph, Picture-in-Picture (stretchable and moving).
3	Swatch switching	Switchable to Whitehot, Redhot, Iron, Blackhot, Rain.HC, Rainbow, Lava Swatches
	Isothermal switching	Automatic, proportional, downward, upward, interval, manual isothermal (triangle adjustment on the sliding color bar).
4	Image editing	Flip, level reversal, undo, revert
5	Quick selection	Swipe up and down to select, click  edit image QR Code, and click  export QR Code
6	Remark	Text notes, voice notes (tap  to re-record, touch to  delete voice notes).
7	Markup tool	Center point, high temperature point, low temperature point, temperature value
8	Temperature measurement tools	Point, line, rectangle, circle, contrast (select a temperature measurement tool, click compare, and then click another temperature measurement tool, repeat the operation to delete, the point temperature measurement can only be compared with the point temperature measurement, Q series has no comparison), delete (delete after selecting the tool).
9	Temperature measurement	The high and low temperature, average temperature, and comparative data display of the temperature measurement area

	data	
10	Temperature measurement parameters	Adjustable image parameters (blend adjustment is only valid for images in picture-in-picture mode).

**Test report**

File name: 86806.bmp  
QRCode:   
Company name: UNI-T  
Test user: UNI-T  
Shooting time: 2023-03-08 14:46:46  
Export time: 2024-03-12 16:42:54



Message	Details
Center point	31.5°C
Max	41.0°C
Min	24.6°C
Emissivity	0.95

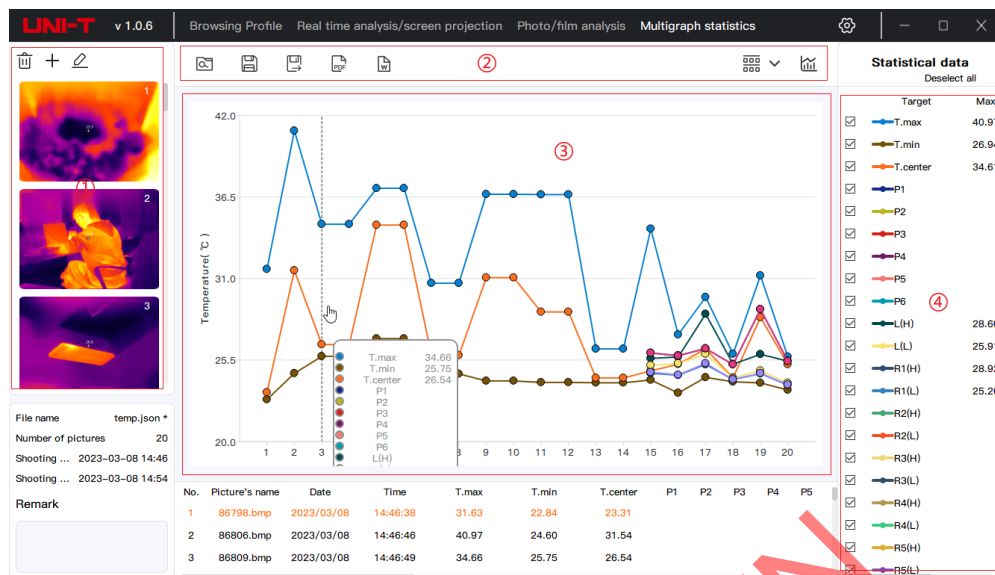
Analytic object	Max	Min	Avg
R1	37.2 °C	26.8 °C	32.9 °C
C1	34.1 °C	25.2 °C	28.0 °C

Comparison object	Max	Min	Avg
C1△R1	3.1 °C	1.6 °C	4.8 °C

A	B	C	D	E	F	G	H	I	J
25.3	24.8	23.9	23.1	22.5	21.9	22.1	21.7	21.4	21.9
25.6	25.4	24.8	23.9	23	22.7	22	21.8	21.7	21.6
25.9	25.9	25.5	24.9	24.3	23.3	22.7	22.2	21.8	21.6
26.1	25.9	25.6	25.4	24.9	24.4	23.5	22.5	22.1	21.6
25.6	25.7	25.8	25.4	25.3	24.9	24.4	23.2	22.5	22
25.8	25.9	26	25.8	25.7	25.6	25.3	24.5	23.5	22.8
25.8	25.9	25.9	25.8	25.8	25.5	25	24.5	23.9	23.9
25.9	25.8	25.8	25.9	25.9	25.9	25.7	25.7	25.6	24.8
25.4	25.6	25.6	25.6	25.8	25.9	25.7	25.5	25.7	25.6
25.5	25.5	25.4	25.6	25.8	25.9	25.8	25.8	25.9	25.8
25.4	25.5	25.7	25.5	25.7	25.9	25.8	25.8	26	25.9
25.5	25.5	25.5	25.5	25.6	25.6	25.8	25.7	25.8	25.8
25.1	25.4	25.4	25.4	25.5	25.4	25.6	25.7	25.7	25.7
25.7	25.5	25.5	25.3	25.3	25.5	25.5	25.5	25.7	25.6
25.2	25.4	25.3	25.2	25.2	25.3	25.3	25.3	25.5	25.6
25.2	25.4	25.5	25.3	25.3	25.4	25.4	25.3	25.4	25.4
25.4	25.4	25.4	25.4	25.3	25.4	25.2	25.2	25.2	25.3
25.5	25.5	25.4	25.5	25.4	25.4	25.4	25.4	25.4	25.3
25.4	25.4	25.3	25.3	25.4	25.4	25.4	25.1	25.2	25.2
25.3	25.2	25.4	25.4	25.3	25.3	25.3	25.1	25.3	25.2
25.2	25.1	25.3	25.3	25.3	25.3	25.2	25.1	25.1	25.2
25	25.1	25.1	25.2	25.2	25.2	25.2	25.1	25.2	25
24.9	25	25.2	25.1	25.2	25.1	25.2	25.1	25.2	25
25	25	25.2	25.1	25.1	25.2	25.2	25	25	24.9
24.7	25.1	25.2	25.2	25.3	25.2	25.1	25.1	25	25.1
25.3	25.3	25.4	25.2	25.3	25.2	25.2	25.1	25.1	25.2
25.2	25	25.1	25.2	25.1	25.2	25.1	25	25.1	25.2
24.9	25	25.1	25	25.1	25	25.1	24.9	25	25
24.9	24.9	24.9	24.9	25	25	25	24.9	24.8	24.9
24.6	24.7	24.8	24.7	24.8	24.9	25	24.8	24.9	24.9
24.4	24.5	24.8	24.6	24.7	24.8	24.8	24.7	24.8	24.7
24.5	24.6	24.8	24.7	24.7	24.8	24.8	24.7	24.7	24.6
24.8	24.8	24.9	24.8	24.9	24.9	24.9	25	24.8	24.8
24.4	24.5	24.6	24.6	24.8	24.9	24.6	24.8	24.9	24.7
24	24.2	24.5	24.3	24.5	24.6	24.6	24.6	24.6	24.6
24	24.2	24.4	24.5	24.4	24.5	24.5	24.6	24.6	24.6
23.2	24	24.1	24.3	24.3	24.3	24.4	24.4	24.4	24.5
22.3	23	23.5	23.9	24.2	24.2	24.3	24.2	24.4	24.4
21.6	22.2	22.6	22.2	22.6	24.1	24.2	24.2	24.2	24.2

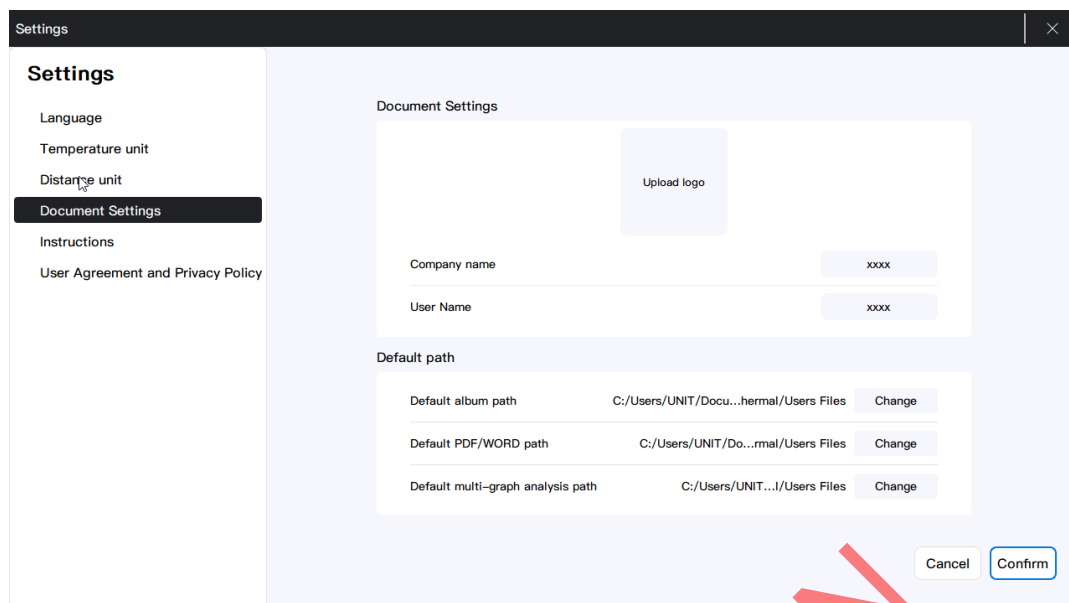
[Export PDF](#)[Export Excel](#)

## 4. Multigraph statistics



Region	Name	Description
1	Select image	Delete, add, modify images (right-click a selected image to delete all images).
2	Main menu	Read, save, save as, export pdf (if the export format is selected CSV will present the data in tabular form), sort, export the chart
3	Charts	Line chart and temperature measurement data display (drag left and right to view data).
4	Statistical data	The temperature measurement target, maximum, minimum, and average value are displayed, but the data will not be displayed on the chart interface if you uncheck it

## 5. Settings



- (1) Language: switch language;
- (2) Temperature unit: choose to switch °C, °F, K;
- (3) Distance unit: switchable m, ft;
- (4) Document settings: You can customize the logo, company name, user, and default path according to your needs (the default album path is the "My Computer" folder storage path, The path can be selected as the one level above the bottom-most folder).
- (5) Instructions: check the operation manual;
- (6) User agreement and privacy policy.

Note: After modifying the settings, click "Confirm" to save.