

UNI-TREND TECHNOLOGY (CHINA) CO., LTD.

TEST REPORT

SCOPE OF WORK

EMC TESTING-UTi384G, UTi256G

REPORT NUMBER

220623148GZU-007

ISSUE DATE

29-August-2022

[REVISED DATE]

[-----]

PAGES

38

DOCUMENT CONTROL NUMBER

FCC Part 15:2020-f

© 2017 INTERTEK



TEST REPORT

Applicant Name & : UNI-TREND TECHNOLOGY (CHINA) CO.,LTD.
Address : No 6, Gong Ye Bei 1 st Road, Songshan Lake National High-Tech
Industrial Development Zone, Dongguan, Guangdong Province,
China
Manufacturing Site : Same as Applicant
Intertek Report No: 220623148GZU-007

Test standards

CFR 47, FCC Part 15, Subpart B: 2020

Sample Description

Product : Professional Thermal Imager
Model No. : UTi384G, UTi256G
Electrical Rating : Powered by 3.7V rechargeable Li-ion battery
Serial No. : Not Labeled
Date Received : 23 June 2022
Date Test : 21 July 2022
Conducted

Prepared and Checked By

Richard Liu

Richard Liu

Engineer

Approved By:

Dean Liu

Dean Liu

Project Engineer

This report is for the exclusive use of Intertek's Client and is provided pursuant to the agreement between Intertek and its Client. Intertek's responsibility and liability are limited to the terms and conditions of the agreement. Intertek assumes no liability to any party, other than to the Client in accordance with the agreement, for any loss, expense or damage occasioned by the use of this report. Only the Client is authorized to permit copying or distribution of this report and then only in its entirety. Any use of the Intertek name or one of its marks for the sale or advertisement of the tested material, product or service must first be approved in writing by Intertek. The observations and test results in this report are relevant only to the sample tested. This report by itself does not imply that the material, product, or service is or has ever been under an Intertek certification program.

Intertek Testing Services Shenzhen Ltd. Guangzhou Branch

Room 02, & 101/E201/E301/E401/E501/E601/E701/E801 of Room 01 1-8/F., No. 7-2. Caipin Road, Science City, GETDD,
Guangzhou, Guangdong, China

TEST REPORT

CONTENT

TEST REPORT	1
CONTENT	3
1. TEST RESULTS SUMMARY	4
2. EMC RESULTS CONCLUSION.....	5
3. LABORATORY MEASUREMENTS.....	6
4. EQUIPMENT USED DURING TEST	7
5. EMI TEST.....	9
5.1 CONDUCTED DISTURBANCE VOLTAGE AT MAINS PORTS	9
5.1.1 Block Diagram of Test Setup.....	9
5.1.2 Test Setup and Procedure	9
5.1.3 Limit.....	10
5.1.4 Test Data and curve.....	11
5.2 RADIATED EMISSION 30 MHz -1000 MHz	15
5.2.1 Block Diagram of Test Setup.....	15
5.2.2 Test Setup and Procedure.....	15
5.2.3 Limit.....	16
1.1.1 Test Data and Curve	17
5.3 RADIATED EMISSION ABOVE 1 GHZ	21
5.3.1 Block Diagram of Test Setup.....	21
1.1.2 Test Setup and Procedure.....	21
5.3.2 Limit.....	22
5.3.3 Test Data and Curve	23
6. APPENDIX I - PHOTOS OF TEST SETUP	26
7. APPENDIX II – PHOTOS OF EUT	28

TEST REPORT

1. TEST RESULTS SUMMARY

Classification of EUT: Class A

Test Item	Standard	Result
Conducted disturbance voltage at mains ports	CFR 47, FCC Part 15, Subpart B	Pass
Radiated emission (30 MHz–1 GHz)	CFR 47, FCC Part 15, Subpart B	Pass
Radiated emission (Above 1 GHz)	CFR 47, FCC Part 15, Subpart B	Pass
Remark: Reference publication is used for methods of measurement: ANSI C63.4:2014		

Remark:

1. The symbol “N/A” in above table means Not Applicable.
2. When determining the test results, measurement uncertainty of tests has been considered.

UNI-TREND.VN

TEST REPORT

2. EMC RESULTS CONCLUSION

RE: EMC Testing Pursuant to FCC part 15 performed on the Professional Thermal Imager, Models: UTi384G, UTi256G.

Model UTi256G is declared to be identical to model UTi384G in terms of electrical and mechanical design. The Model UTi384G has better video recording and resolution than the Model UTi256G.

We tested the Professional Thermal Imager, Model: UTi384G, to determine if it was in compliance with the relevant standards as marked on the Test Results Summary. We found that the unit met the requirement of FCC part 15 standard when tested as received. The worst case's test data was presented in this test report.

The production units are required to conform to the initial sample as received when the units are placed on the market.

UNI-TREND.VN

TEST REPORT

3. LABORATORY MEASUREMENTS

Configuration Information

Support Equipment:

Equipment	Model No.	Rating	Supplier
Adapter	A1401	100-240~, 50/60Hz, 0.5A	Intertek

Rated Voltage and frequency under test: AC 120 V~; 60 Hz, 3.7V DC
Condition of Environment: Temperature: 22~28°C
Relative Humidity: 35~60%
Atmosphere Pressure: 86~106kPa

Notes:

1. The EMI measurements had been made in the operating mode produced the largest emission in the frequency band being investigated consistent with normal applications. An attempt had been made to maximize the emission by varying the configuration of the EUT.

2. Test Facility accreditation:

A2LA Certificate Number 0078.10

Intertek Testing Services Shenzhen Ltd. Guangzhou Branch is accredited by A2LA and Listed in FCC website. FCC accredited test labs may perform both Certification testing under Parts 15 and 18 and Declaration of Conformity testing.

3. Test Location:

Intertek Testing Services Shenzhen Ltd. Guangzhou Branch

All tests were performed at:

Room 02, & 101/E201/E301/E401/E501/E601/E701/E801 of Room 01 1-8/F., No. 7-2. Caipin Road, Science City, GETDD, Guangzhou, Guangdong, China

Except Radiated Emissions was performed at:

Room 102/104, No 203, KeZhu Road, Science City, GETDD Guangzhou, China

4. Measurement Uncertainty

No.	Item	Measurement Uncertainty
1	Conducted Emission (9 kHz-150 kHz)	2.54 dB
2	Conducted Emission (150 kHz-30 MHz)	2.51 dB
3	Disturbance Power (30 MHz-300 MHz)	3.13 dB
4	Radiated Emission (9 kHz-30 MHz)	4.15 dB
5	Radiated Emission (30 MHz-1 GHz)	4.62 dB
6	Radiated Emission (1 GHz-6 GHz)	4.67 dB
7	Radiated Emission (6 GHz-18 GHz)	4.76 dB

The measurement uncertainty describes the overall uncertainty of the given measured value during the operation of the EUT.

Measurement uncertainty is calculated in accordance with CISPR16-4-2:2011+A1:2014+A2:2018.

The measurement uncertainty is given with a confidence of 95%, k=2.

Determination of the test conclusion is based on IEC Guide 115 in consideration of measurement uncertainty.

TEST REPORT

4. EQUIPMENT USED DURING TEST

Conducted Disturbance-Mains Terminal (2)

Equipment No.	Equipment	Model	Manufacturer	Calibration Interval
EM031-04	EMI receiver	ESR3	R&S	1Y
EM006-06	LISN	ENV216	R&S	1Y
SA047-111	Digital Temperature-Humidity Recorder	RS210	YIJIE	1Y
EM004-03	EMC shield Room	8m×4m×3m	Zhongyu	1Y
EM031-04-01	EMC32 software (CE)	V10.01.00	R&S	N/A

Radiated Disturbance (30 MHz-1 GHz)

Equipment No.	Equipment	Model	Manufacturer	Calibration Interval
EM030-04	3m Semi-Anechoic Chamber	9×6×6 m3	ETS-LINDGREN	1Y
EM031-02	EMI Test Receiver (9 kHz~7 GHz)	R&S ESR7	R&S	1Y
EM033-01	TRILOG Super Broadband test Antenna (30 MHz-3 GHz)	VULB 9163	SCHWARZBECK	1Y
EM031-02-01	Coaxial cable	/	R&S	1Y
EM036-01	Common-mode absorbing clamp	CMAD 20B	TESEQ	1Y
SA047-118	Digital Temperature-Humidity Recorder	RS210	YIJIE	1Y
EM045-01-01	EMC32 software (RE/RS)	V10.01.00	R&S	N/A

TEST REPORT

Detail of the equipment calibration due date:

Equipment No.	Cal. Due date (DD-MM-YYYY)
Conducted Disturbance-Mains Terminal (1)	
EM080-05	08/06/2023
EM006-05	05/06/2023
SA047-112	22/11/2022
EM004-04	06/01/2023
Conducted Disturbance-Mains Terminal (2)	
EM031-04	06/01/2023
EM006-06	03/09/2022
SA047-111	22/11/2022
EM004-03	06/01/2023
EM031-04-01	N/A
Conducted Disturbance-Load and Control Terminal (1)	
EM080-05	08/06/2023
EM080-05-01	02/09/2022
SA047-112	22/11/2022
EM004-04	06/01/2023
Conducted Disturbance-Load and Control Terminal (2)	
EM080-05	08/06/2023
EM005-06-01	02/09/2022
SA047-112	22/11/2022
EM004-04	06/01/2023
Conducted Disturbance-Telecom Terminal	
EM080-05	08/06/2023
EM011-05	08/04/2023
EM011-06	08/04/2023
EM006-06	03/09/2022
SA047-112	22/11/2022
EM004-04	06/01/2023
Conducted Disturbance-Antenna Terminal	
EM031-04	06/01/2023
EM084-02	17/07/2023
EM041-01	23/01/2023
EM041-02	06/01/2023
SA047-111	22/11/2022
EM004-03	06/01/2023
Radiated Disturbance (CDN Method)	
EM080-05	08/06/2023
EM003-02	16/11/2022
EM003-03	16/11/2022
EM003-01-05	02/09/2022
EM032-02-01	14/07/2023
EM032-02-02	14/07/2023
SA047-112	22/11/2022
EM004-04	06/01/2023
Radiated electromagnetic disturbances (9 kHz-30 MHz)	
EM031-04	06/01/2023
EM061-04	06/03/2023
SA047-111	22/11/2022
EM004-03	06/01/2023
Radiated Disturbance (9 kHz-30 MHz)	
EM030-04	07/04/2023
EM031-02	16/11/2022
EM011-04	27/06/2023
EM031-02-01	08/04/2023
SA047-118	15/07/2023
EM045-01-01	N/A
Radiated Disturbance (30 MHz-1 GHz)	
EM030-04	07/04/2023
EM031-02	16/11/2022
EM033-01	18/10/2022
EM031-02-01	08/04/2023
EM036-01	17/07/2023
SA047-118	15/07/2023
EM045-01-01	N/A
Radiated Disturbance (1-18 GHz)	
EM030-04	07/04/2023
EM031-02	16/11/2022
EM031-03	23/12/2022
EM033-02	26/06/2023
EM033-02-02	08/04/2023
EM022-03	06/05/2023
SA047-118	15/07/2023
EM045-01-01	N/A

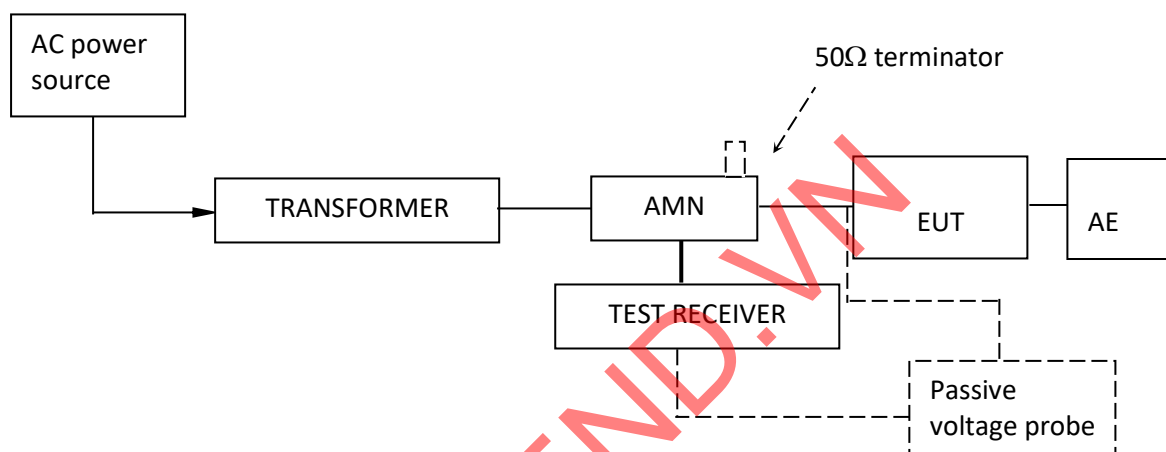
TEST REPORT

5. EMI TEST

5.1 Conducted Disturbance Voltage at mains ports

Test Result: Pass

5.1.1 Block Diagram of Test Setup



5.1.2 Test Setup and Procedure

The EUT was set to achieve the maximum emission level. The mains terminal disturbance voltage was measured with the EUT in a shielded room. The EUT was connected to AC power source through an Artificial Mains Network which provides a 50Ω linear impedance Artificial hand is used if appropriate (for handheld apparatus). The load/control terminal disturbance voltage was measured with passive voltage probe if appropriate.

The table-top EUT was placed on a 0.8m high non-metallic table above earthed ground plane (Ground Reference Plane). And for floor standing EUT, was placed on a 0.1m high non-metallic supported on GRP. The EUT keeps a distance of at least 0.8m from any other of the metallic surface. The Artificial Mains Network is situated at a distance of 0.8m from the EUT. During the test, mains lead of EUT excess 0.8m was folded back and forth parallel to the lead so as to form a horizontal bundle with a length between 0.3m and 0.4m.

The bandwidth of test receiver was set at 9 kHz. The frequency range from 150 kHz to 30MHz was checked.

TEST REPORT

5.1.3 Limit

Frequency range MHz	AC mains terminals dB (uV)	
	Quasi-peak	Average
0.15 to 0.5	79	66
0.5 to 30	73	60
Note : The lower limit is applicable at the transition frequency.		

UNI-TREND.VN

TEST REPORT

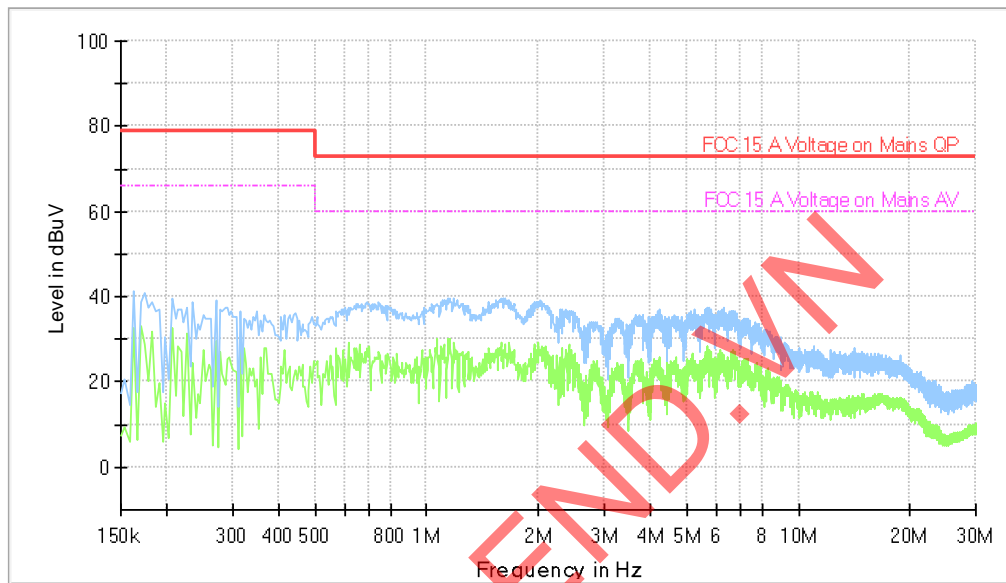
5.1.4 Test Data and curve

At mains terminal:

Tested Wire: Live

Operation Mode: Thermal imaging and charging mode

Full Spectrum



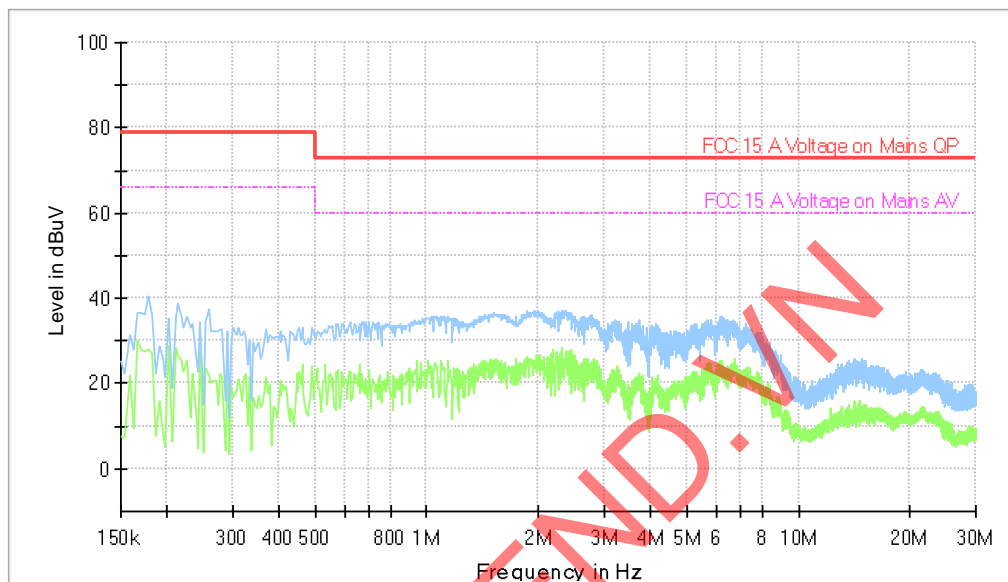
All emission levels are more than 10 dB below the limit.

TEST REPORT

Tested Wire: Neutral

Operation Mode: Thermal imaging and charging mode

Full Spectrum



All emission levels are more than 10 dB below the limit.

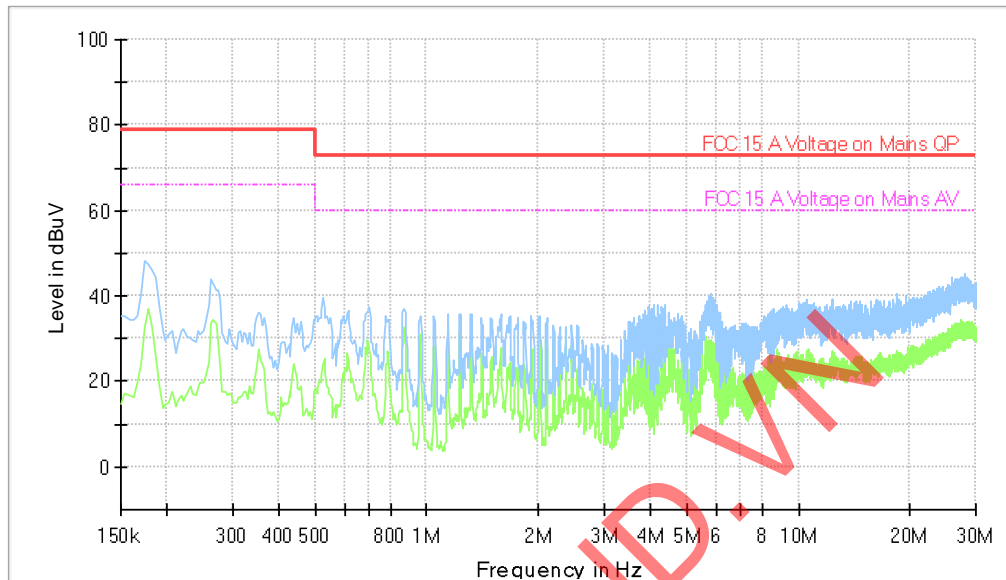
TEST REPORT

At mains terminal:

Tested Wire: Live

Operation Mode: Charging mode

Full Spectrum



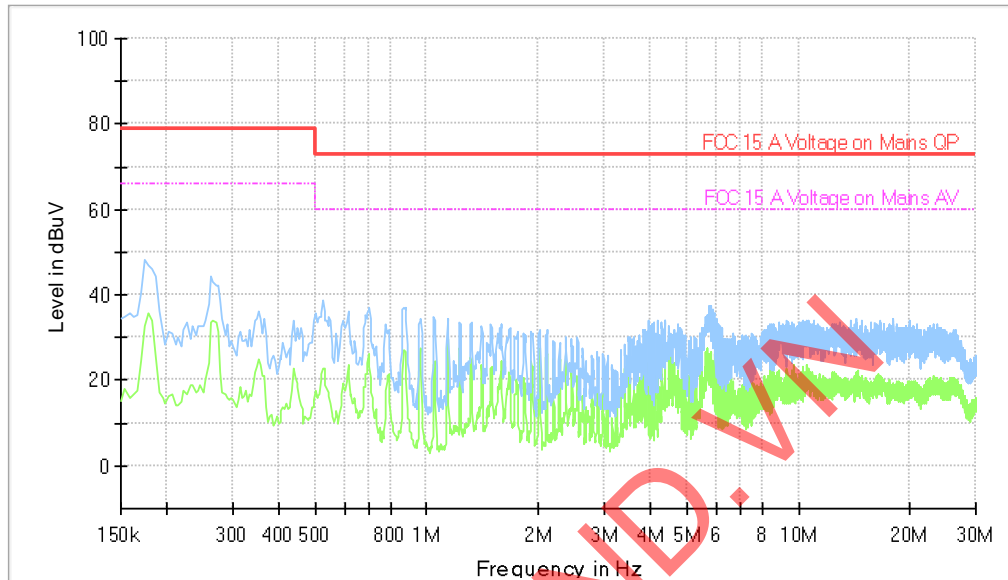
All emission levels are more than 10 dB below the limit.

TEST REPORT

Tested Wire: Neutral

Operation Mode: Charging mode

Full Spectrum



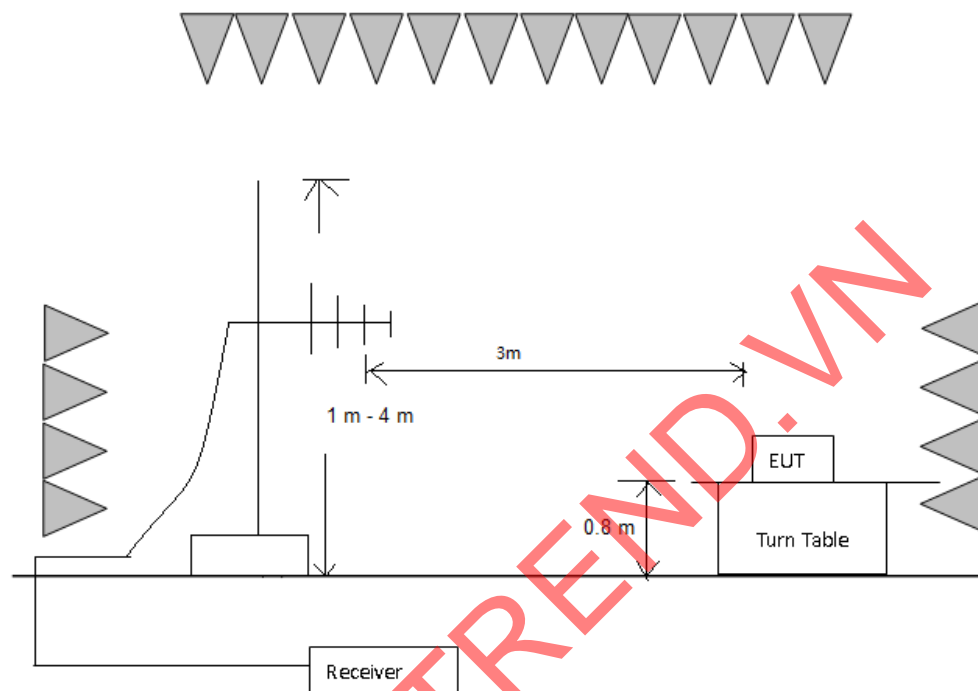
All emission levels are more than 10 dB below the limit.

TEST REPORT

5.2 Radiated Emission 30 MHz -1000 MHz

Test Result: Pass

5.2.1 Block Diagram of Test Setup



5.2.2 Test Setup and Procedure

The measurement was applied in a semi-anechoic chamber. The EUT and simulators were placed on a 0.8 m high foamed table above the horizontal metal ground plane. The turn table rotated 360 degrees to determine the position of the maximum emission level. The EUT was set 3 meters away from the receiving antenna which was mounted on an antenna mask. The antenna moved up and down between from 1 meter to 4 meters to find out the maximum emission level.

Broadband antenna was used as receiving antenna. Both horizontal and vertical polarization of the antenna was set on measurement. In order to find the maximum emission, all of the interface cables were manipulated according to ANSI C63.4 requirement during radiated test.

The bandwidth setting on R&S Test Receiver was 120 kHz.

For an unintentional radiator, including a digital device, the spectrum shall be investigated from the lowest radio frequency signal generated or used in the device, without going below the lowest frequency for which a radiated emission limit is specified, up to the frequency shown in the following table:

TEST REPORT

Highest frequency generated or used in the device or on which the device operates or tunes (MHz)	Upper Frequency of Radiated Measurement
Below 1.705 MHz	30MHz
1.705 MHz – 108 MHz	1 GHz
108 MHz – 500 MHz	2 GHz
500 MHz – 1 GHz	5 GHz
Above 1 GHz	5th harmonic of the highest frequency or 40 GHz, whichever is lower.
At transitional frequencies the lower limit applies.	

Remark: Radiated Emission was performed from 30 MHz to 1 GHz.

5.2.3 Limit

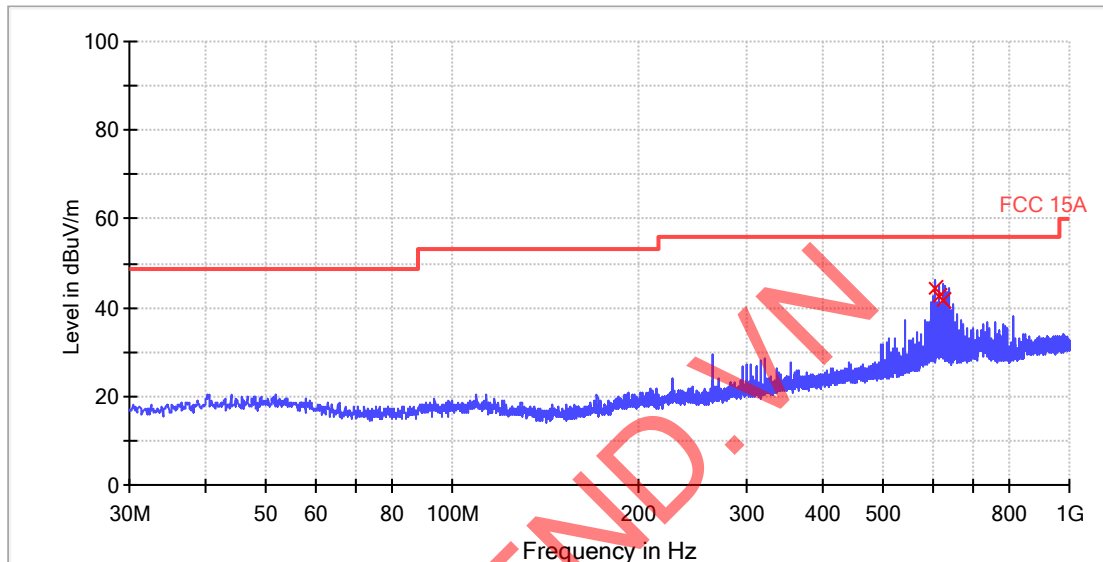
Class A limit at 3 m test distance:

Frequency range MHz	Quasi-peak limits dB (μV/m)
30 to 88	49.6
88 to 216	54.0
216 to 960	56.9
960 to 1000	60.0
At transitional frequencies the lower limit applies.	

TEST REPORT

1.1.1 Test Data and Curve

Operation Mode: Thermal imaging mode
Horizontal



QP

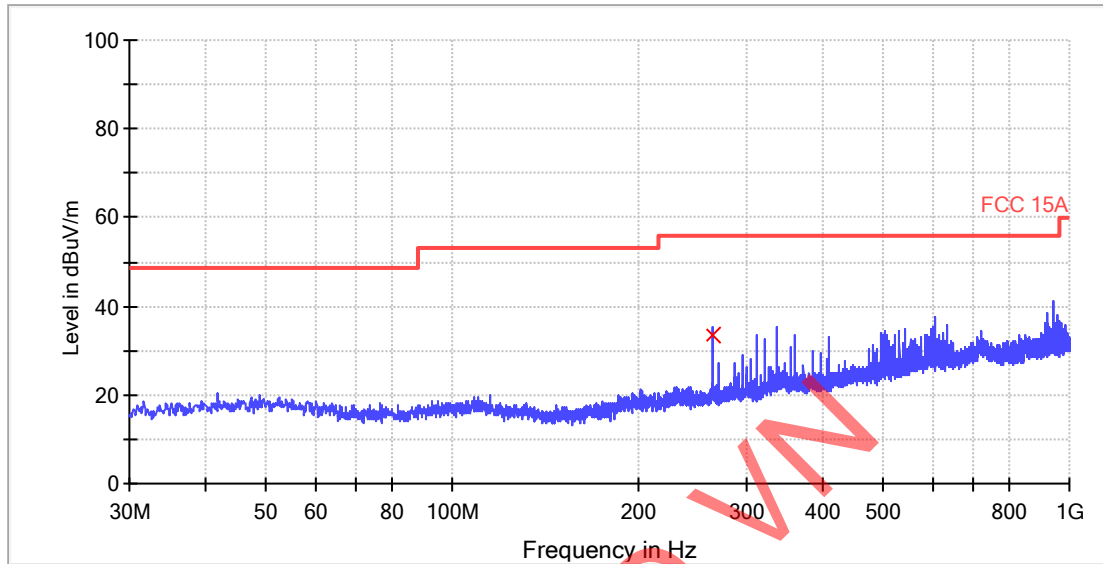
Frequency (MHz)	Quasi Peak (dBuV/m)	Bandwidth (kHz)	Pol	Corr. (dB)	Margin - QPK (dB)	Limit - QPK (dBuV/m)
607.480000	44.4	120.000	H	21.4	12.6	57.0
615.960000	42.8	120.000	H	21.5	14.2	57.0
624.400000	41.9	120.000	H	21.5	15.1	57.0

Remark:

1. Corr. (dB) = Antenna Factor (dB) + Cable Loss (dB)
2. Quasi Peak (dBμV/m) = Corr. (dB) + Read Level (dBμV)
3. Margin (dB) = Limit QPK (dBμV/m) – Quasi Peak (dBμV/m)

TEST REPORT

Vertical



QP

Frequency (MHz)	Quasi Peak (dBuV/m)	Bandwidth (kHz)	Pol	Corr. (dB)	Margin - QPK (dB)	Limit - QPK (dBuV/m)
263.960000	33.5	120.000	V	14.2	23.5	57.0

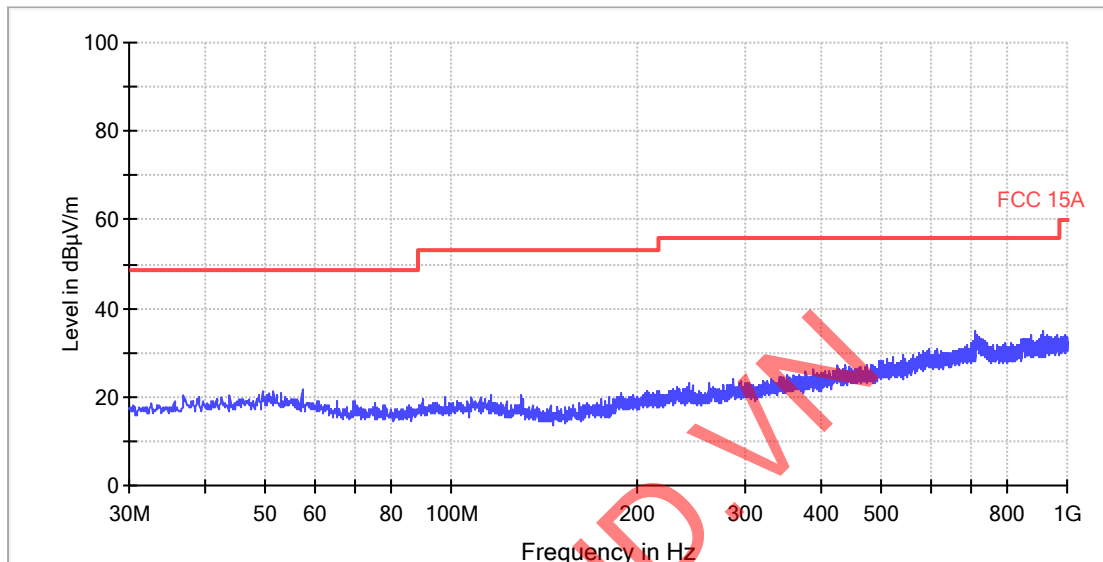
Remark:

1. Corr. (dB) = Antenna Factor (dB) + Cable Loss (dB)
2. Quasi Peak (dBuV/m) = Corr. (dB) + Read Level (dBuV)
3. Margin (dB) = Limit QPK (dBuV/m) - Quasi Peak (dBuV/m)

TEST REPORT

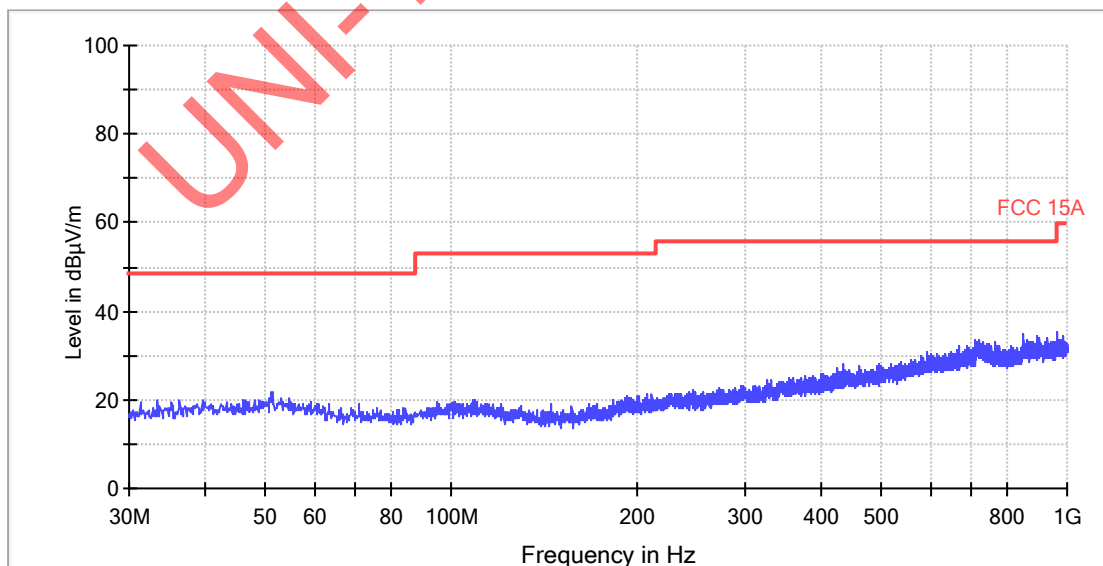
Operation Mode: Charging mode

Horizontal



All emission levels are more than 6 dB below the limit.

Vertical

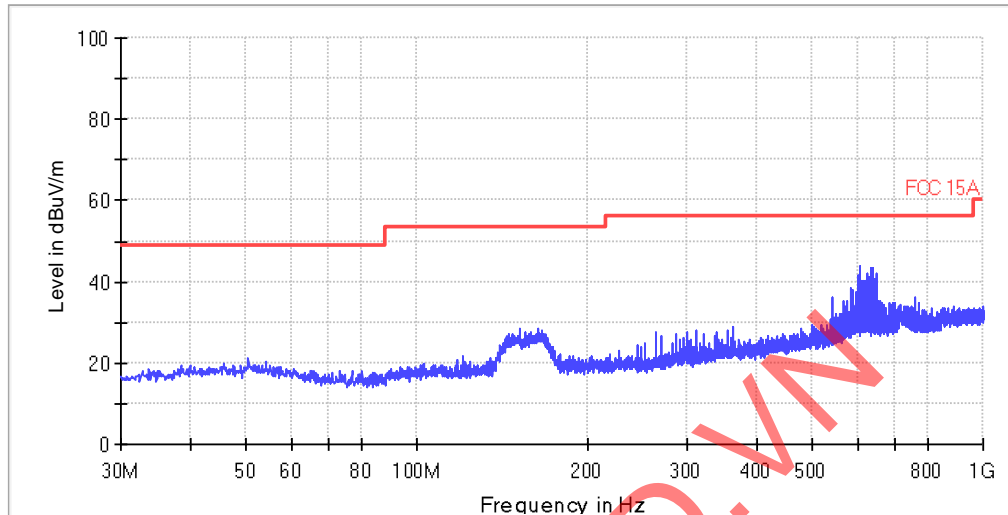


All emission levels are more than 6 dB below the limit.

TEST REPORT

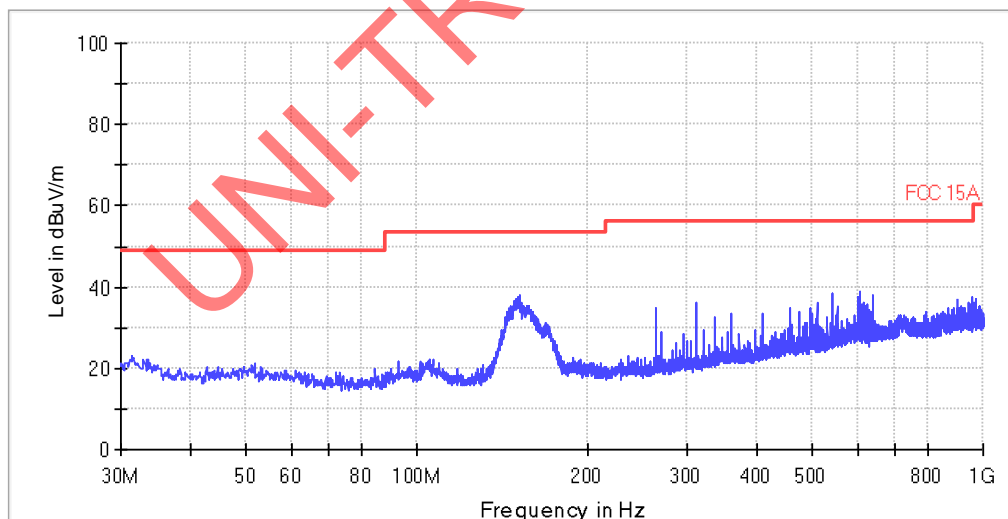
Operation Mode: Thermal imaging and charging mode

Horizontal



All emission levels are more than 6 dB below the limit.

Vertical



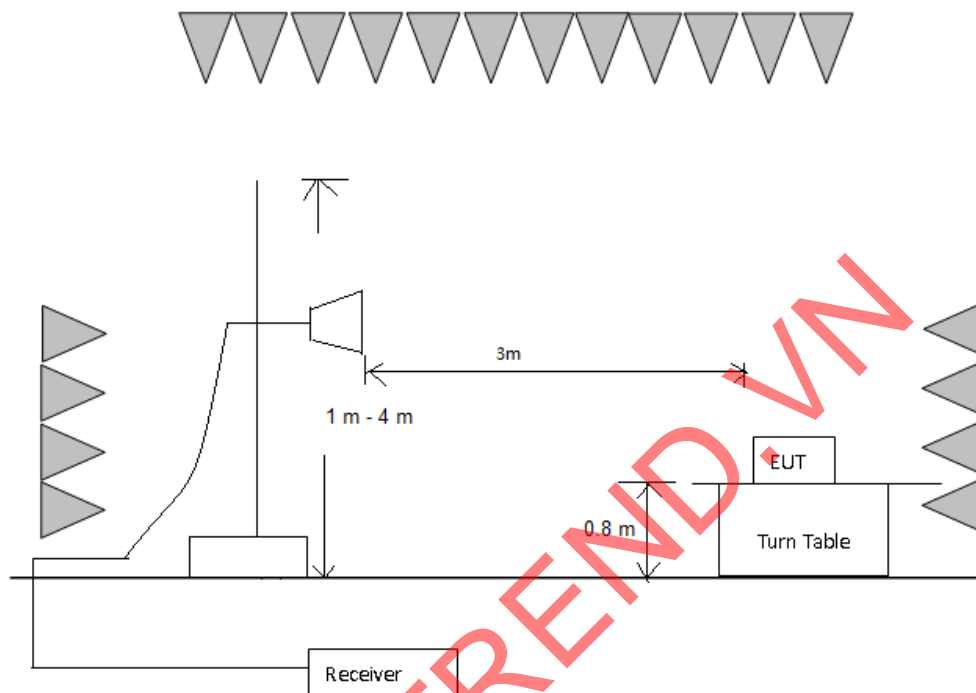
All emission levels are more than 6 dB below the limit.

TEST REPORT

5.3 Radiated Emission above 1 GHz

Test Result: Pass

5.3.1 Block Diagram of Test Setup



1.1.2 Test Setup and Procedure

The measurement was applied in a semi-anechoic chamber with absorbing material placed on the ground. The EUT were placed on a 0.8m high foamed table above the horizontal metal ground plane. The turntable varied every 30 degrees to determine the position of the maximum emission level. The EUT was set 3 meters away from the receiving antenna which was mounted on an antenna pole. The antenna moved up and down from 1 meter to 4 meters to find out the maximum emission level.

Horn antenna was used as receiving antenna. Both horizontal and vertical polarization of the antenna was set on measurement. In order to find the maximum emission, all of the interface cables were manipulated during radiated test.

For an unintentional radiator, including a digital device, the spectrum shall be investigated from the lowest radio frequency signal generated or used in the device, without going below the lowest frequency for which a radiated emission limit is specified, up to the frequency shown in the following table:

Highest Frequency Generated or Used in Device	Upper Frequency of Radiated Measurement
Below 1.705 MHz	30MHz

TEST REPORT

1.705 MHz – 108 MHz	1 GHz
108 MHz – 500 MHz	2 GHz
500 MHz – 1 GHz	5 GHz
Above 1 GHz	5th harmonic of the highest frequency or 40 GHz, whichever is lower.
At transitional frequencies the lower limit applies.	

Remark: Radiated Emission was performed from 1 GHz to 13 GHz since the highest frequency generated from the EUT was 2480 MHz.

5.3.2 Limit

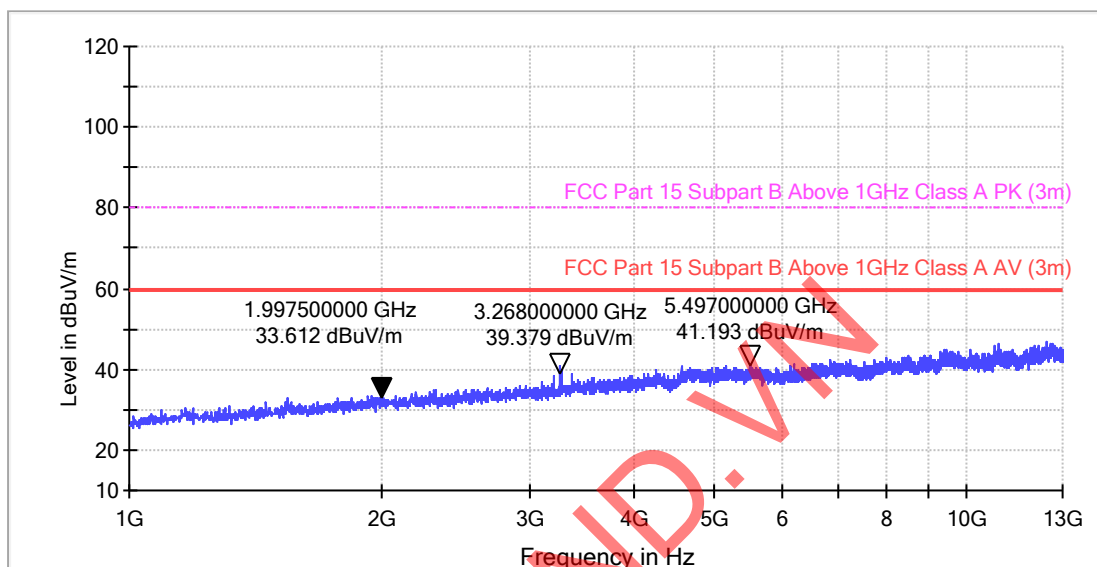
Class A limit at 3 m test distance:

Frequency range MHz	Linear Average Detector dB (μV/m)	Peak Detector dB (μV/m)
> 1000	60.0	80.0
At transitional frequencies the lower limit applies.		

TEST REPORT

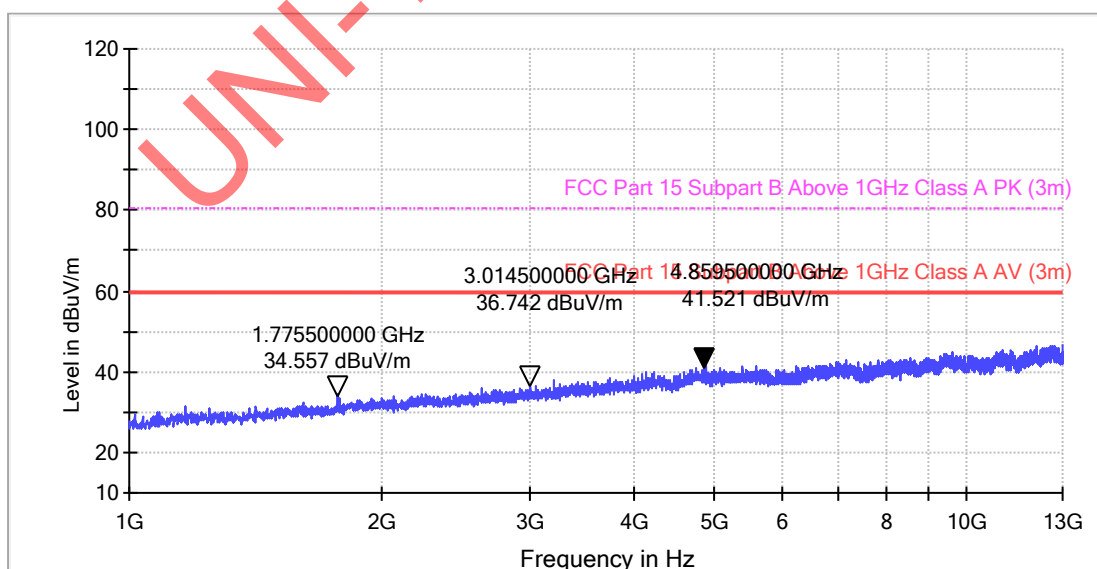
5.3.3 Test Data and Curve

Operation Mode: Thermal imaging mode
Horizontal



All emission levels are more than 6 dB below the limit.

When Peak emission level was below AV limit, the AV emission level did not be record
Vertical

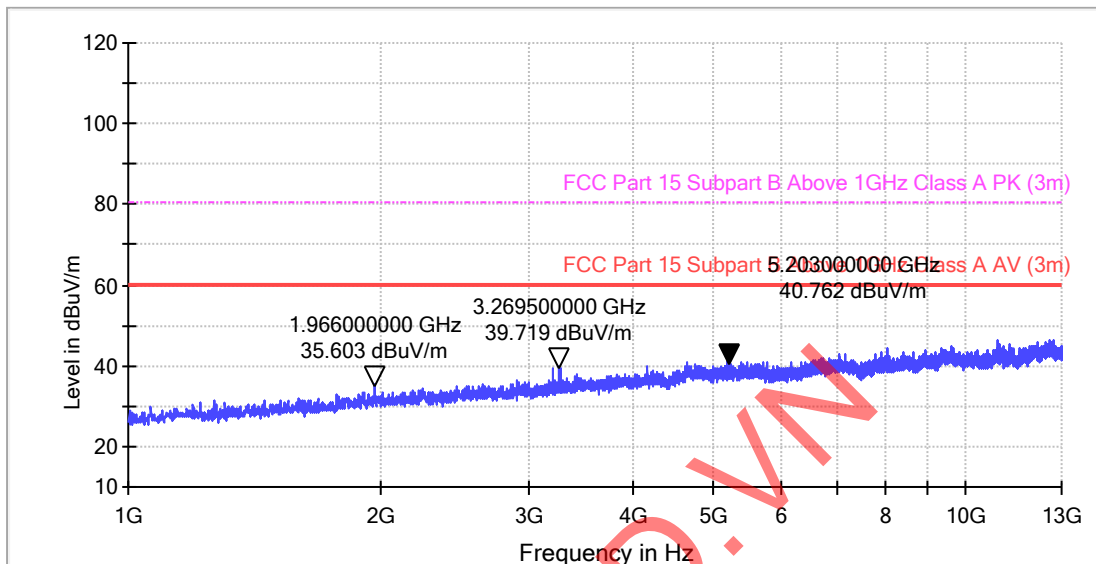


All emission levels are more than 6 dB below the limit.

When Peak emission level was below AV limit, the AV emission level did not be record

TEST REPORT

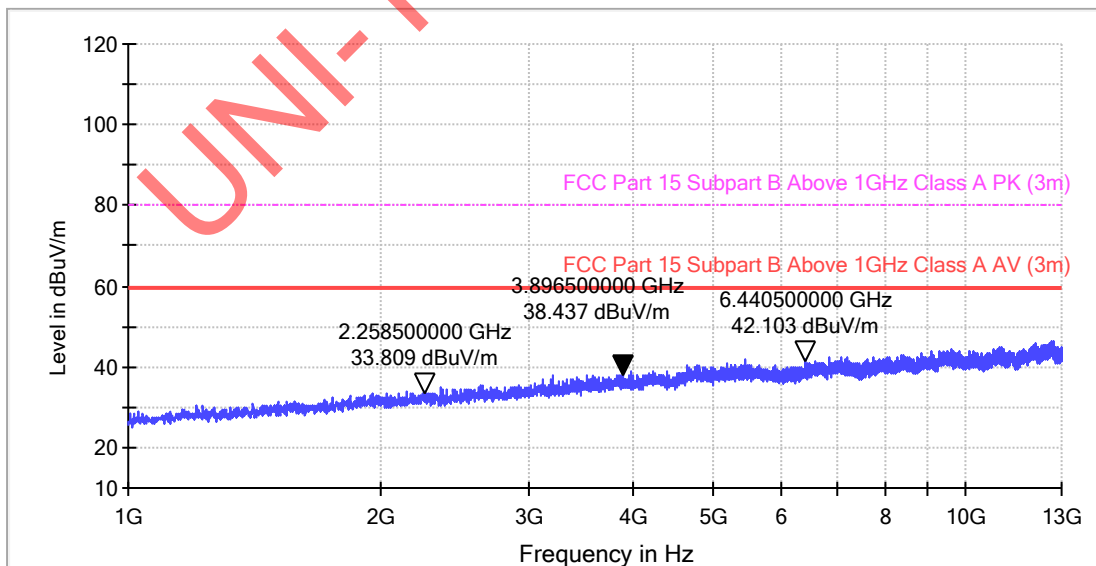
Operation Mode: Charging mode
Horizontal



All emission levels are more than 6 dB below the limit.

When Peak emission level was below AV limit, the AV emission level did not be record

Vertical

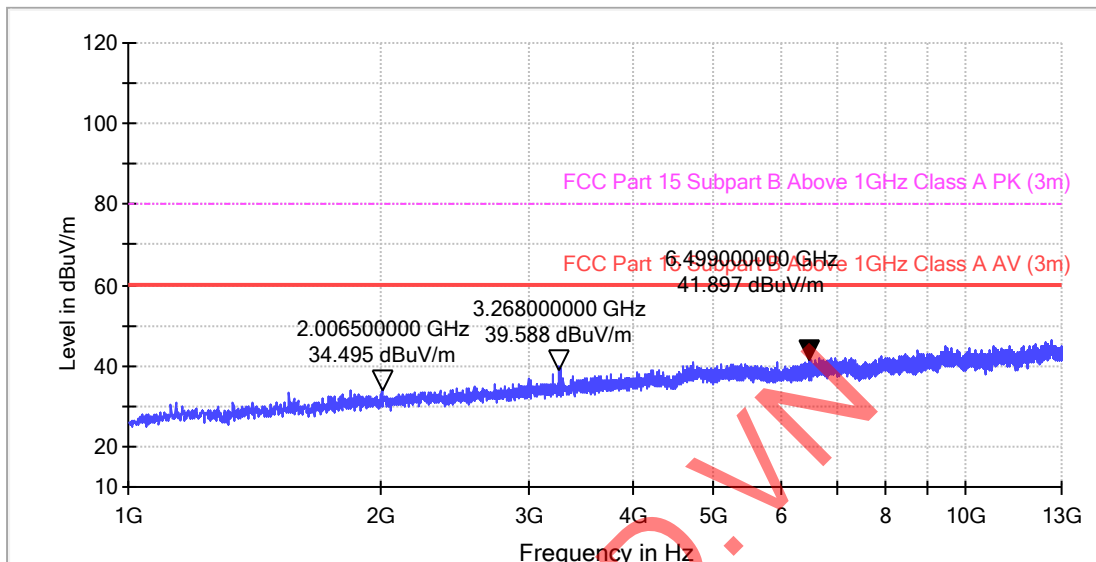


All emission levels are more than 6 dB below the limit.

When Peak emission level was below AV limit, the AV emission level did not be record

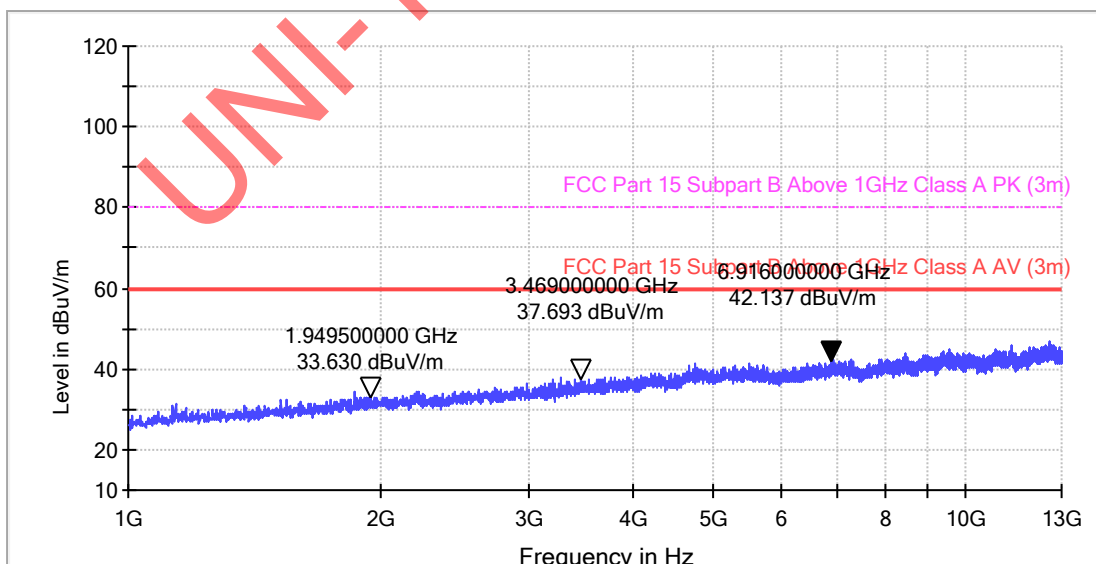
TEST REPORT

Operation Mode: Thermal imaging and charging mode
Horizontal



All emission levels are more than 6 dB below the limit.

When Peak emission level was below AV limit, the AV emission level did not be record
Vertical



All emission levels are more than 6 dB below the limit.

When Peak emission level was below AV limit, the AV emission level did not be record.

TEST REPORT

6. APPENDIX I - PHOTOS OF TEST SETUP

Conducted Emission



Radiated Emission (30 MHz–1000 MHz)



TEST REPORT

Radiated Emission (Above 1 GHz)



TEST REPORT

7. APPENDIX II – PHOTOS OF EUT

External view



External view



TEST REPORT

External view



Internal view



TEST REPORT

Internal view



Internal view



TEST REPORT

Battery view



Battery view



TEST REPORT

Battery view

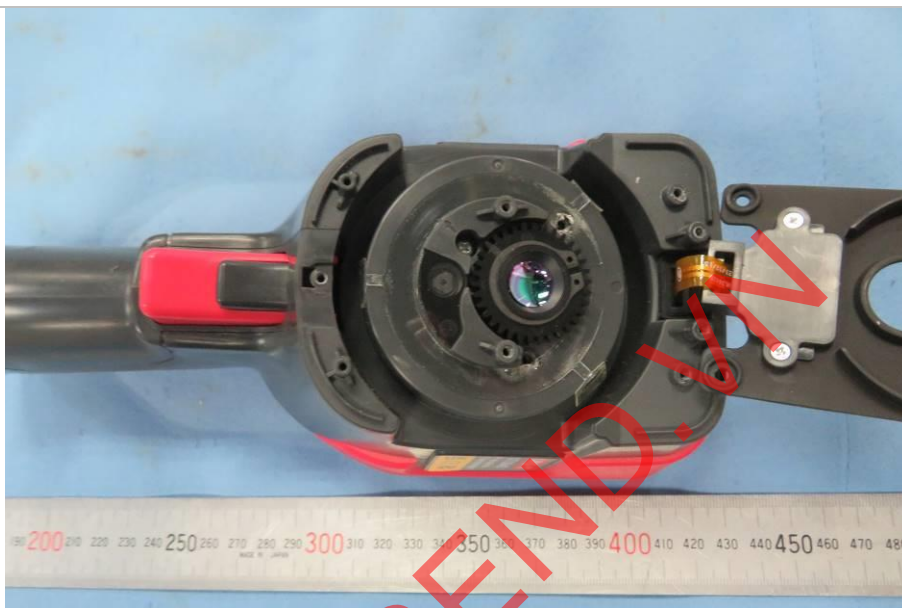


Internal view



TEST REPORT

Internal view

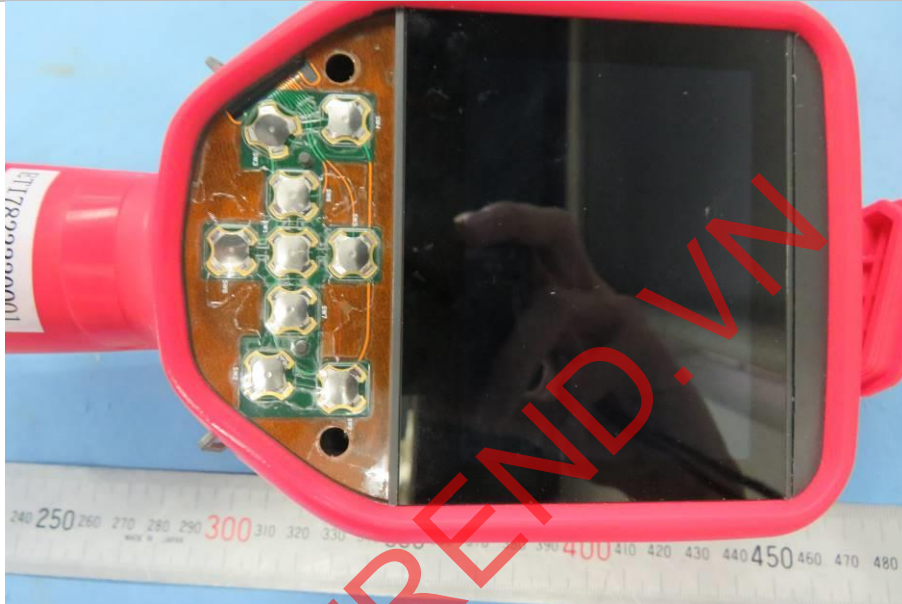


Internal view

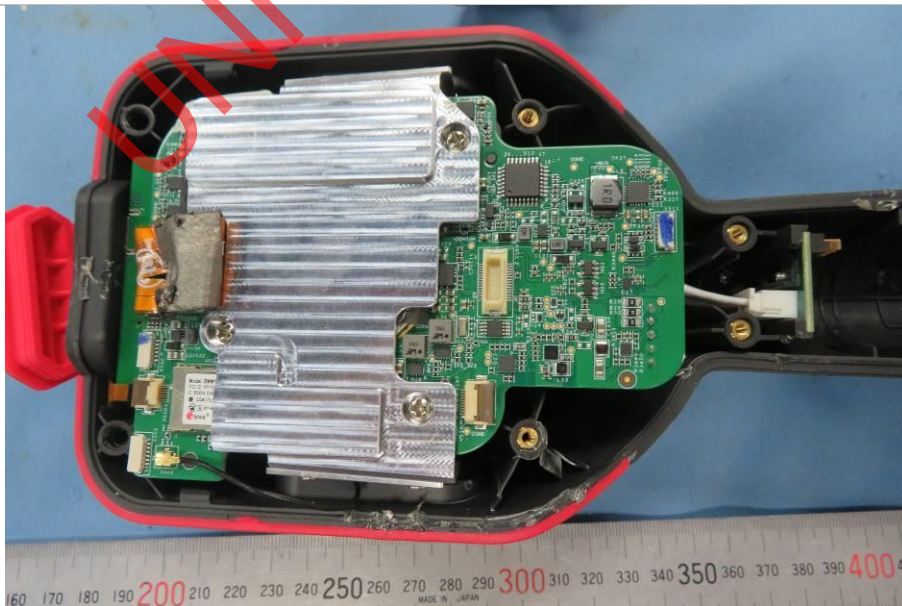


TEST REPORT

Internal view

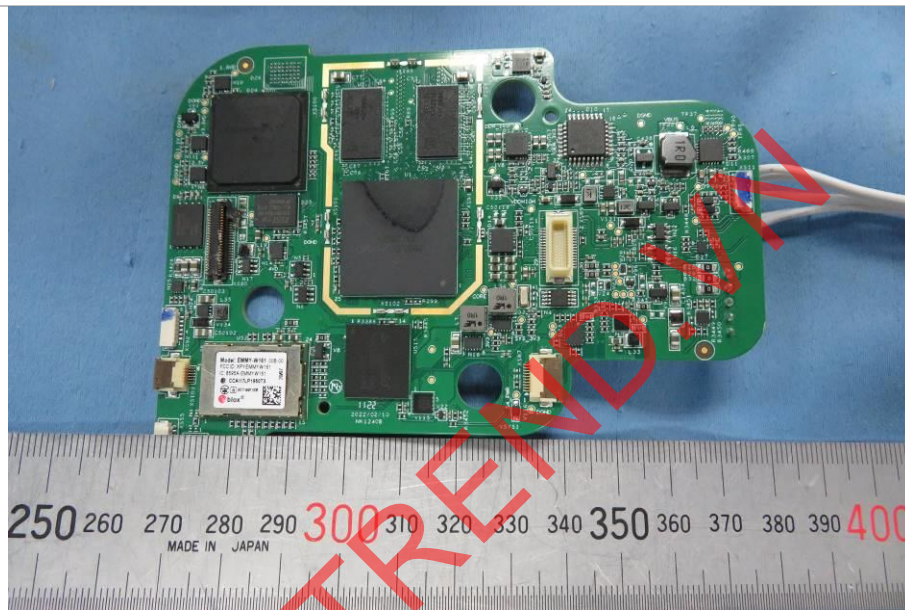


Internal view



TEST REPORT

PCB view



PCB view



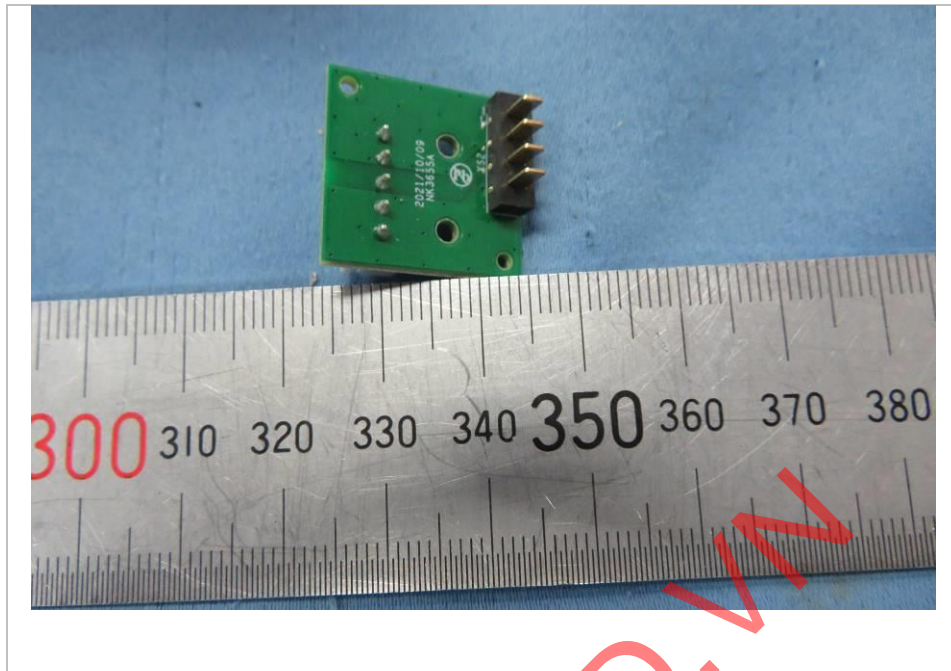
TEST REPORT

PCB view

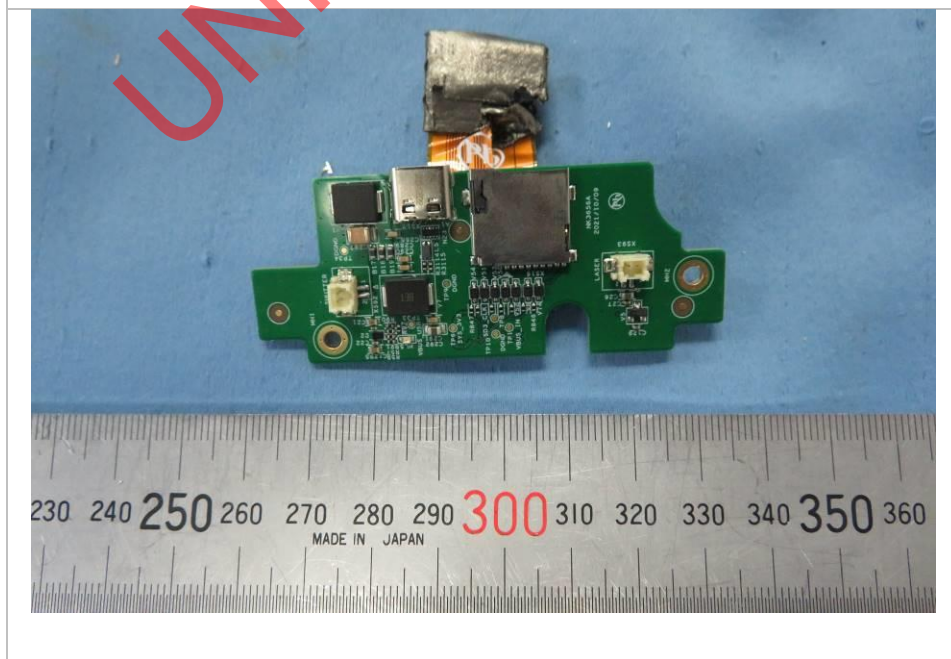


PCB view

TEST REPORT

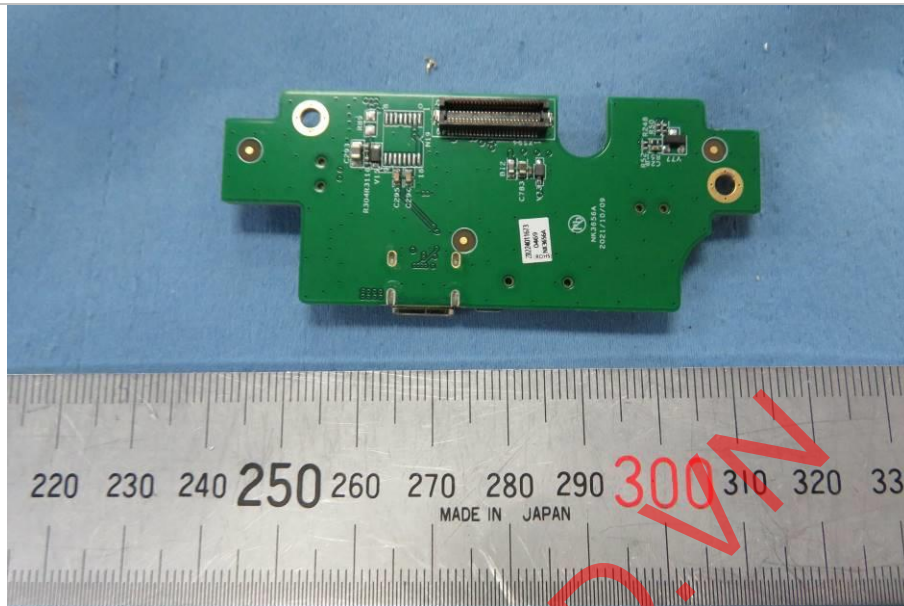


PCB view



TEST REPORT

PCB view



*****End of Report*****