

UT353 BT

Mini Sound Meter (Bluetooth Version) Operating Manual

1. Introduction

UT353 BT with Bluetooth function is a stable, safe, reliable mini sound meter, widely used in noise detection, quality control, health control, environmental noise measurement in factory, traffic, home audio and other places.

This operating manual includes relevant safety information and warnings. Please read this manual carefully and observe all cautions.

⚠ Warning:

Before using the product, please read the operation rules carefully.

2. Out of the Box

Open the packing box and take out the meter. Please check carefully if any items are missing or damaged.

1. Blister----- 1
2. Wind-proof ball----- 1
3. Operating manual----- 1

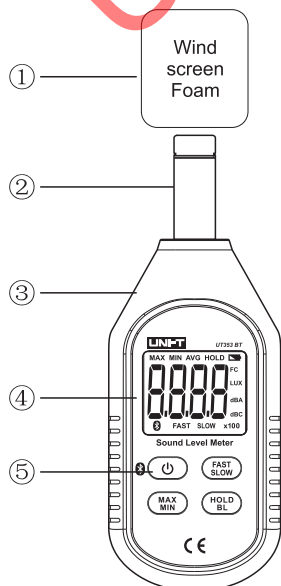
3. Operation Safety Rules

This product strictly follows the requirements of SJ/T 10423 "General specification for sound level meters" in design and production.

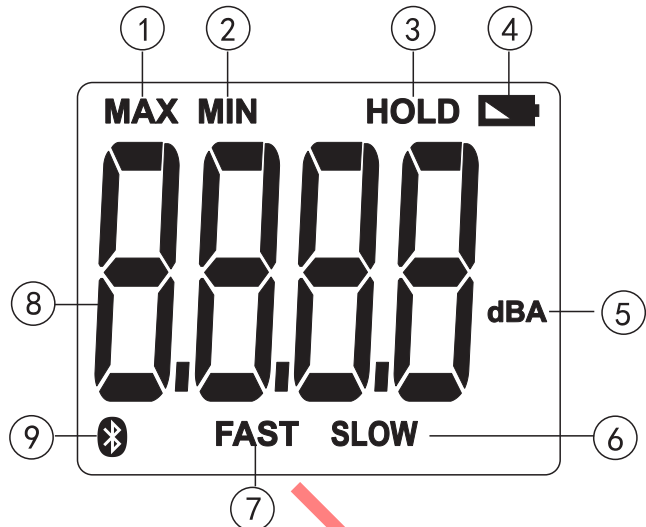
1. Please check the meter and the accessories before using and beware of any damage or abnormal phenomenon. If you find the case is damaged or the LCD shows nothing, or you consider that the meter could not work properly anymore, please stop using it.
2. Observe the operating instructions while measuring.
3. Do not open the meter at will or change internal wiring to avoid damages to the meter.
4. When the LCD displays "🔋", replace the battery timely. Remove the battery if the meter is not used for a long time.
5. Do not store or use the meter in high temperature, high humidity, flammable, combustible or strong electromagnetic environment.
6. Please use soft cloth and neutral detergent to clean the case for maintenance. Do not use grinding agent and solvent to avoid case corrosion and damage to the meter.
7. This product has passed CE certification.

4. Product Exterior

1. Wind-proof ball
2. Microphone
3. Meter case
4. LCD display
5. Function keys



5. Display Interface



1	Maximum measurement
2	Minimum measurement
3	Data hold
4	Low battery
5	A weighted and noise unit
6	Slow response rate
7	Fast response rate
8	Measurement value
9	Bluetooth communication symbol indication

6. Key Function and Setup

(remark : "short press" means : about 1 second continuous press ; "long press" means : about 2 second continuous press)

1. ⏻ ON/OFF/ Bluetooth communication

Short press once to start up; short press again to power off.

Bluetooth communication : Under the state of boosting unit , long press to enter Bluetooth communication mode, and then long press again to quit Bluetooth communication mode

2. FAST/SLOW

Sampling time: When measuring, pressing this key to select between fast time of 125ms and slow time of 1s.

3. MAX/MIN

Pressing this key to select maximum, minimum and normal value measurement; when maximum or minimum measurement is selected, the meter always shows the maximum reading or the minimum reading.

4. HOLD/BL

HOLD: Short press this key once to hold the measurement; short press the key once again to exit data hold and continue normal measurement. BL: long press this key to turn on backlight, and long press it again to turn off backlight.

5. Automatic shutdown

No operation 5 minutes after , then shut down the unit automatically (the default mode is of automatic shutdown mode)

When you want to remove the automatic shutdown function, hold down the "hold" + "⏻" key to boot. LCD has a "APO OFF" character prompt, the automatic shutdown function will be removed .

7. Bluetooth APP specification

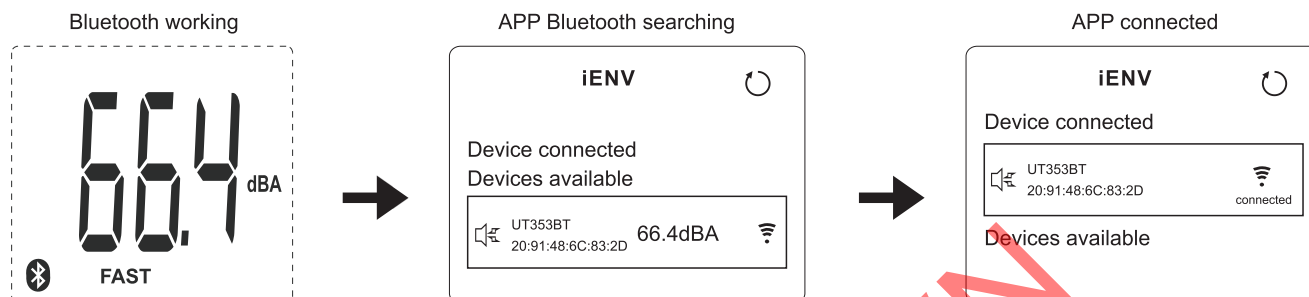
1. To connect Bluetooth , you need to install the application (iENV APP) on the smartphone
2. iOS device access it in App Store , Android device access it in Play Store or Please login www.uni-trend.com to download.

Compatibility:

- ios 8.4 or higher version
- Android 4.3 or higher version
- Bluetooth 4.0 or higher version
- Memory 1G or more

3. Before Bluetooth APP and product are connected , you need to open the Bluetooth at the same time, and through the APP search the Bluetooth, and select the corresponding products to be connected in iENV APP

- When in the working state, long press the power button to turn on or off the Bluetooth
- a. Bluetooth icon is flashing, indicating that the product is not connected with APP
- b. Bluetooth icon isn't flashing, indicating that the product is connected with APP



8. Performance Testing

1. Technical Parameter

- Range: 30~130dB
- Resolution: 0.1dB
- Accuracy: ± 1.5 dB
- Frequency Response: 31.5Hz~8KHz
- Ambient Temperature: $23^{\circ}\text{C} \pm 5^{\circ}\text{C}$
- Ambient Humidity: $\leq 80\%$ RH
- Temperature Coefficient: $0.1 \times \text{Accuracy} / ^{\circ}\text{C}$

2. General Type

- LCD display: 4-bit LCD display. The maximum display is 9999.
- Overload indication: The meter shows "UN" when under range, and shows "OL" when over range.
- Low battery indication: prompt "🔋".
- Sampling rate: fast rate 125ms, slow rate 1s
- Sensor type: 1/2 inch condenser microphone
- Impact strength: Can withstand the impact of landing from 1 meter height.
- Power requirement: 1.5V batteries (AAA) $\times 3$
- Power consumption: More than 12 hours with Bluetooth enabled.
- Product size: 154mm \times 55mm \times 28mm
- Spec of thread to connect the product with three tripod : $m\frac{1}{4}$ "
- Weight: 116g

3. Environment Limitation

- Indoor use
- Maximum operating height: 2000m
- Pollution level: 2
- Working temperature and humidity:
 - $0^{\circ}\text{C} \sim 30^{\circ}\text{C}$ (not greater than 80%RH)
 - $30^{\circ}\text{C} \sim 40^{\circ}\text{C}$ (not greater than 80%RH)
 - $40^{\circ}\text{C} \sim 50^{\circ}\text{C}$ (not greater than 45%RH)
- Storage temperature and humidity:
 - $-20^{\circ}\text{C} \sim 60^{\circ}\text{C}$ (not greater than 80%RH)

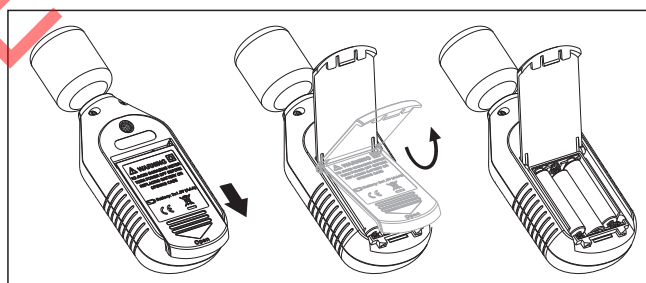
4. General Maintenance

Warning: please do not open the meter case to avoid affecting device accuracy or damage to the meter.

- Maintenance and service of the meter should be accomplished by professional personnel or designated maintenance department.
- Clean the case by dry cloth periodically. Detergent with abrasive or solvent composition shall not be used.

5. Battery Installation and Replacement

- This device uses 3 pieces of AAA 1.5V batteries. Please see figure below for steps of battery installation and replacement.
- Turn the panel down, push the battery cover open in the direction of the arrow, lift the cover and remove the batteries; install new batteries in accordance of polarity indications.
- Please use batteries of same type instead of improper ones.
- Close the cover tightly after installing new batteries.



UNI-T

UNI-TREND TECHNOLOGY (CHINA) CO., LTD.

No6, Gong Ye Bei 1st Road,
Songshan Lake National High-Tech Industrial
Development Zone, Dongguan City,
Guangdong Province, China
Tel: (86-769) 8572 3888
<http://www.uni-trend.com>