



# **10A DC resistance tester upper Computer**

## **Software manual**

---

November, 2024 (English)

Copyright © 2024 Uni-Trend Technology (China) Co., Ltd.

# catalogue

1. The Device menu .....	2
1.1. Connect .....	2
1.2. Export to the PDF .....	2
1.3. Automatic Test .....	2
1.4. Import the stored data .....	3
1.5. Export to Excel .....	4
2. The View menu .....	4
2.1. DC resistance measurement .....	4
2.2. Conductor length measurement .....	4
2.3. Check out the stored data .....	5
2.4. Introduction of the measurement page .....	5
3. The Settings menu .....	6
3.1. Language .....	6
3.2. Sampling frequency setting .....	6

uni-trend.vn

The main interface of the software is as follows:

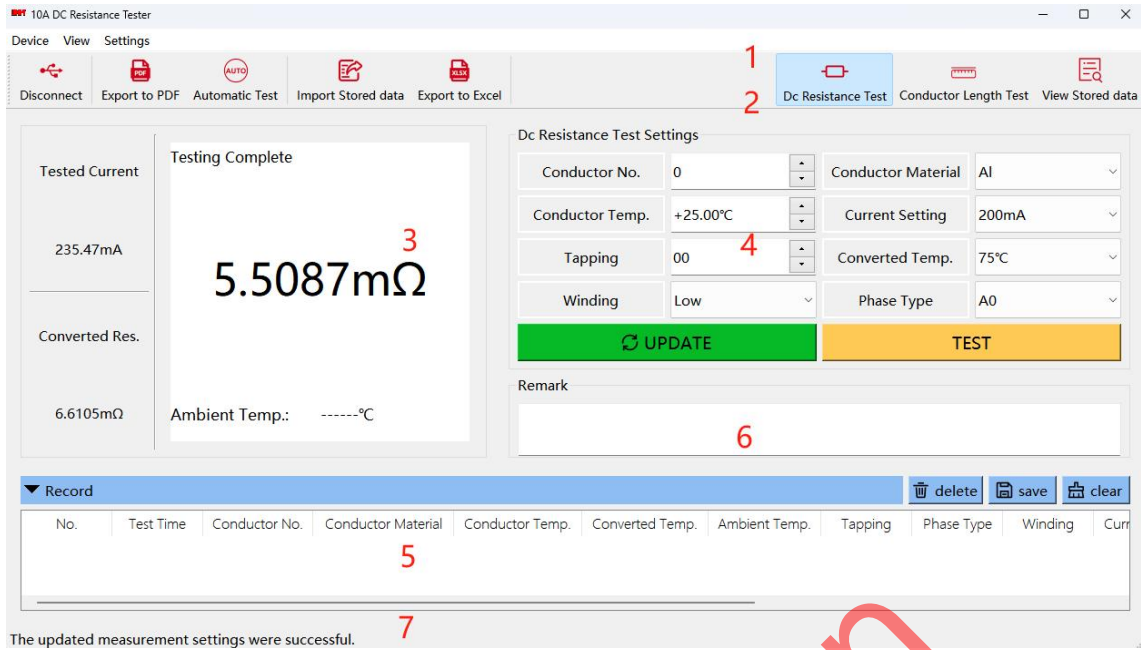


Figure 1. The DC resistance measurement interface

1	Main menu area	Various functions can be used through the main menu
2	Toolbar area	You can be used quickly through the toolbar
3	Display area	Display the real-time sampling data and test status of the device
4	Command area	Send the commands to the device
5	record area	Keep the test records in the form
6	Note area	Notes to the test process can be saved to the PDF file when exporting the PDF file
7	Status bar area	Display prompt information

# 1. The Device menu

## 1.1. Connect



Connect the computer and the tester with a USB cable, turn on the PC software switch in the tester settings, open the PC software, click the "Connect" button, if the connection is successful, it will be displayed as "Disconnect", and start reading real-time data. Tap "Disconnect" to disconnect the device.

## 1.2. Export to the PDF



Click the "Export to PDF" button to pop up the PDF setting pop-up window. After setting it, click the "OK" button to export the PDF file of real-time data.

A screenshot of a "PDF Settings" window. It contains three sections: "User Information" with fields for Company, Name, and Contact; "Tester Information" with fields for Model and Name; and "Measuring Object" with fields for Name and Scene. An "OK" button is located at the bottom right.

Figure 2. The PDF setting window

## 1.3. Automatic Test



Click the "Automatic Test" button:

- > Set the test times and the time interval of the two tests, click the "OK" button to save the current settings, and start the automatic test.
- > Click on the "Cancel" button to cancel the automatic testing.

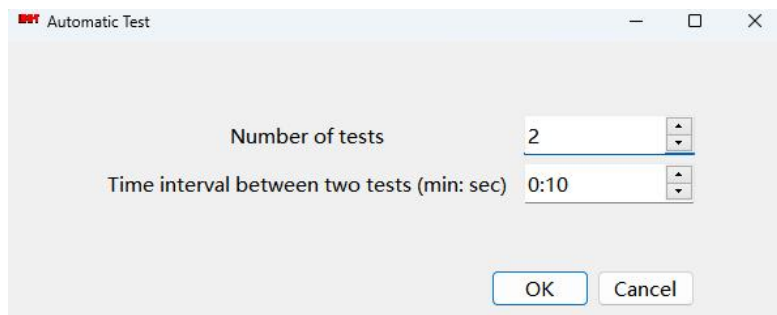


Figure 3. Automatic test setting window

- > For each complete test, the data are automatically saved in the record form.
- > Click the "Exit automatic Test" button of the popup to exit the automatic test.

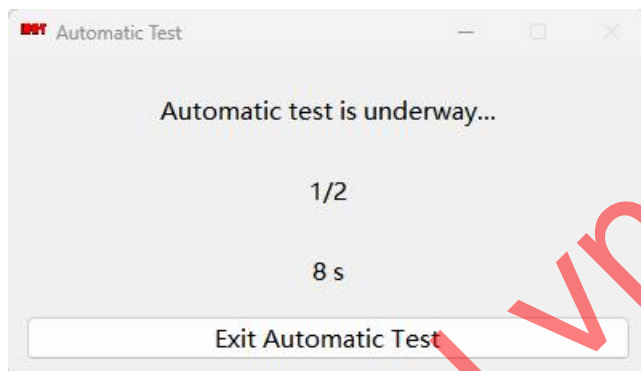


Figure 4. Window in the automatic test

## 1.4. Import the stored data



Click the "Import Stored Data" button to read the data stored by the device.

No.	Test Time	Conductor No.	Tested Current	Tested Res.	Conductor Len.	Sample No.	ial Cross-Sectional Ar	andard Value(11	onductor Mater	or
3	2024-03-22 22:06:19	0	235.41mA	5.5051mΩ					Al	
4	2024-03-22 22:06:20	0	235.41mA	5.5051mΩ					Al	
5	2024-03-22 22:06:22	0	235.41mA	5.5051mΩ					Al	
6	2024-03-22 22:06:24	0	235.41mA	5.5051mΩ					Al	
7	2024-03-22 22:06:25	0	235.41mA	5.5051mΩ					Al	
8	2024-03-22 22:06:27	0	235.41mA	5.5051mΩ					Al	
9	2024-03-22 22:06:29	0	235.41mA	5.5051mΩ					Al	
10	2024-03-22 22:06:30	0	235.41mA	5.5051mΩ					Al	
11	2024-03-22 22:06:31	0	235.41mA	5.5051mΩ					Al	
12	2024-03-22 22:15:01	0	235.41mA	5.5051mΩ					Al	

The keylock request is successful.

Figure 5. Import into the stored data

## 1.5. Export to Excel



Click the "Export to Excel" button to export the Excel file for storing the data.

## 2. The View menu

### 2.1. DC resistance measurement



Click "DC Resistance Test", the software displays the DC resistance measurement page, and the device jumps to the DC resistance measurement page.

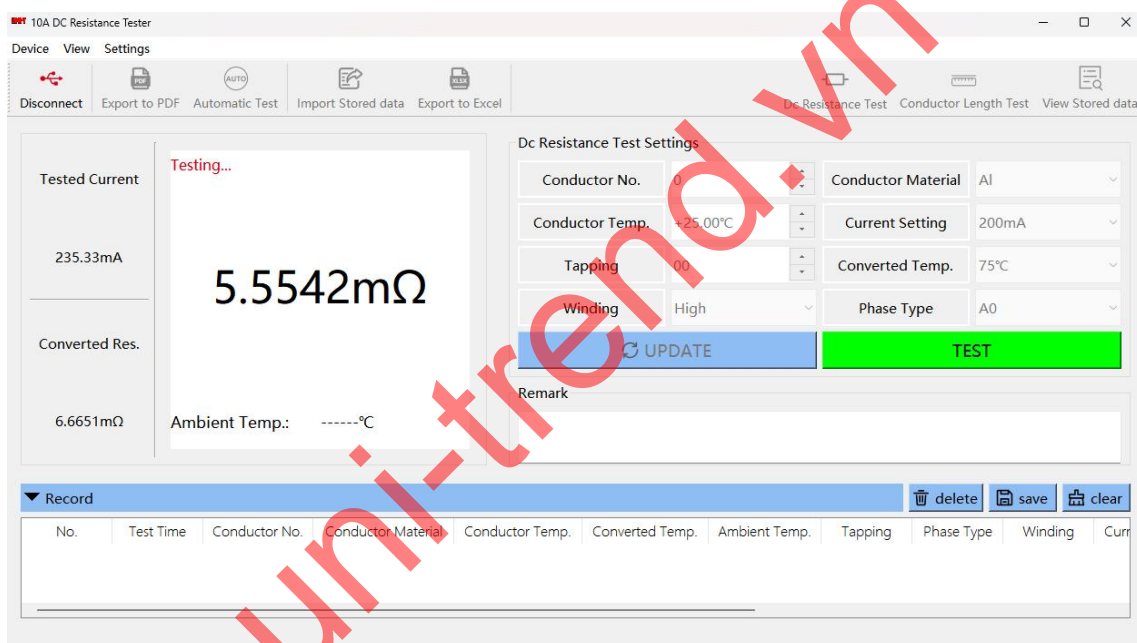


Figure 6. In the DC resistance test

### 2.2. Conductor length measurement



Click "Conductor Length Test", the software displays the conductor length measurement page, and the device jumps to the conductor length measurement page.

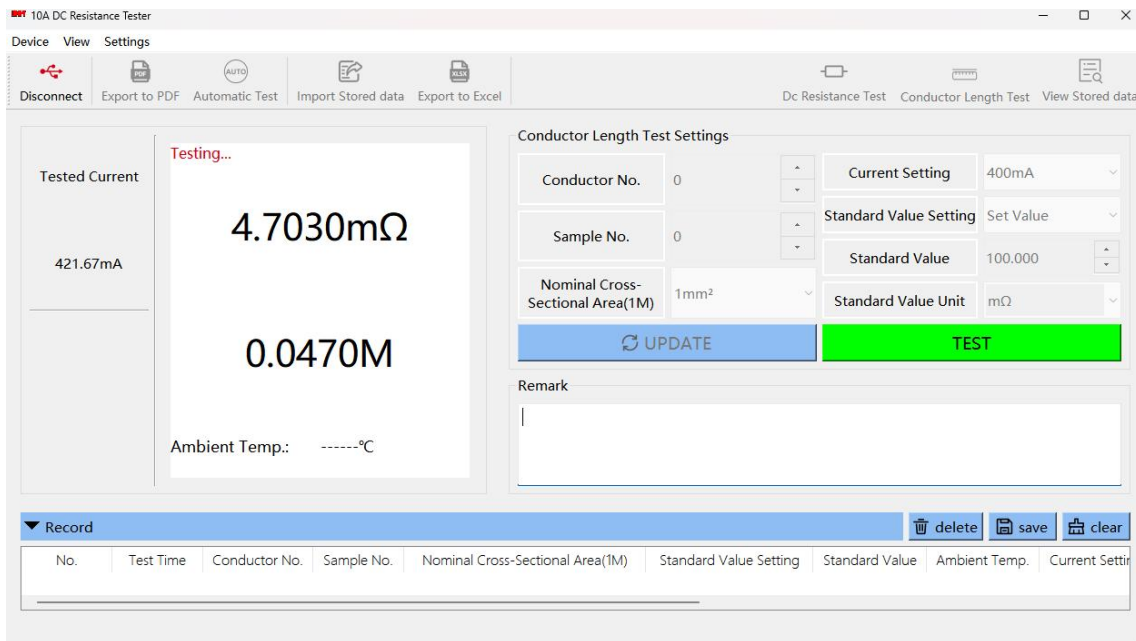


Figure Figure 7. In the conductor length test

## 2.3. Check out the stored data



Click "View Stored Data" to display the import stored data page.

## 2.4. Introduction of the measurement page

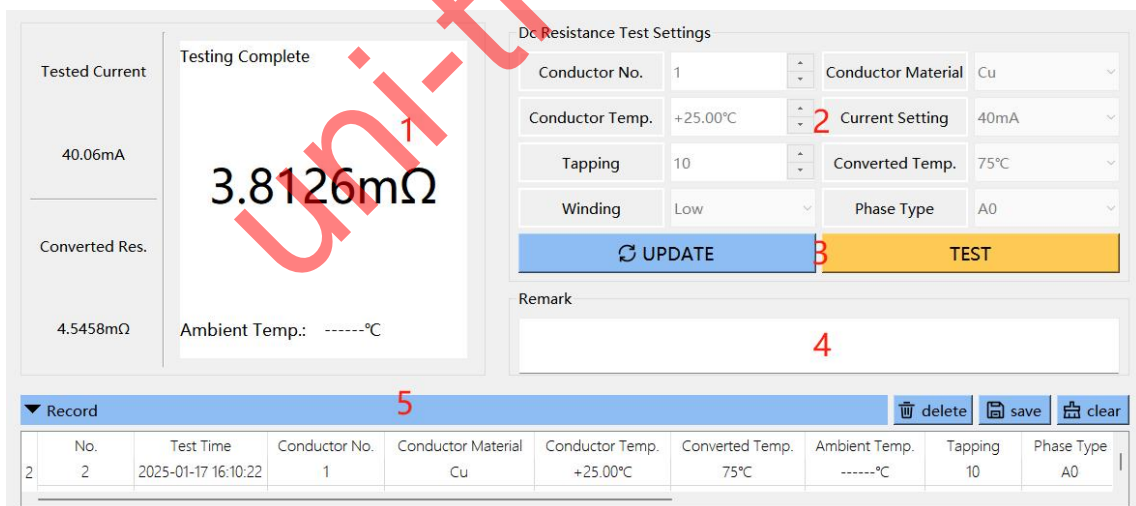


Figure 8. The measurement page

1、 Real-time measurement data are displayed.2. Measurement Settings:

> Click the "Update" button to stop reading the real-time data, in the state of changing the measurement parameters, display green.

> When green is displayed, click the "Update" button to be in the unchangeable measurement parameter state in blue. Start reading the real-time data

> Modify the measurement parameters after the return or click another control to indicate that the modification is completed, if successful, the tester measurement parameters will change.

> Settings failed, status bar display update measurement setting failed, setting succeeded, status bar display update measurement setting succeeded.

3. "Test" button:

Click the button to start the test, which shows green in the test. When in the test, click the button again to stop the test.

4. Note

Note information for the test process.

5. Measurement records

After stopping the testing, the test data is automatically added to the record form.

> Click the "Record" button, can display or hide the record form

> click the "Delete" button, can delete the selected line

> click the "Save" button, can export the record form to the Excel file

> click the "Clear" button, can clear all the data of the record form.

## 3. The Settings menu

### 3.1. Language

- English

Click "Language" -> "English" to empty the data, initialize the interface, and set the page language to English.

- 简体中文

Click "Language" -> "Chinese" to empty the data, initialize the interface, and set the page language to Chinese.

### 3.2. Sampling frequency setting

- Sample Frequency Settings

Click "Sampling Time interval" to set the sampling time interval for the real-time data. Range can be set to 200ms-800ms.

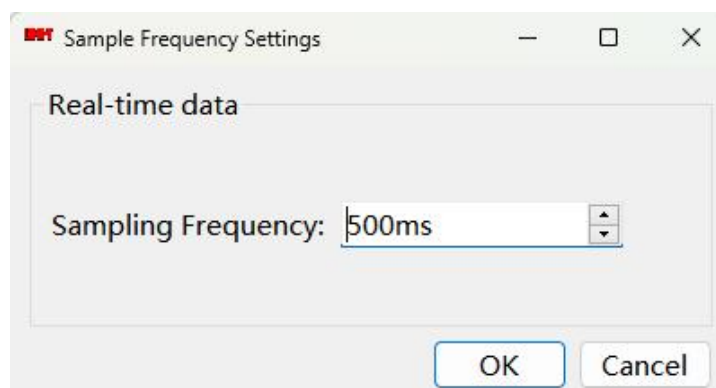


Figure 9. Sampling frequency setting window